

# Supporting nurse researchers: A study on breast cancer screening literature

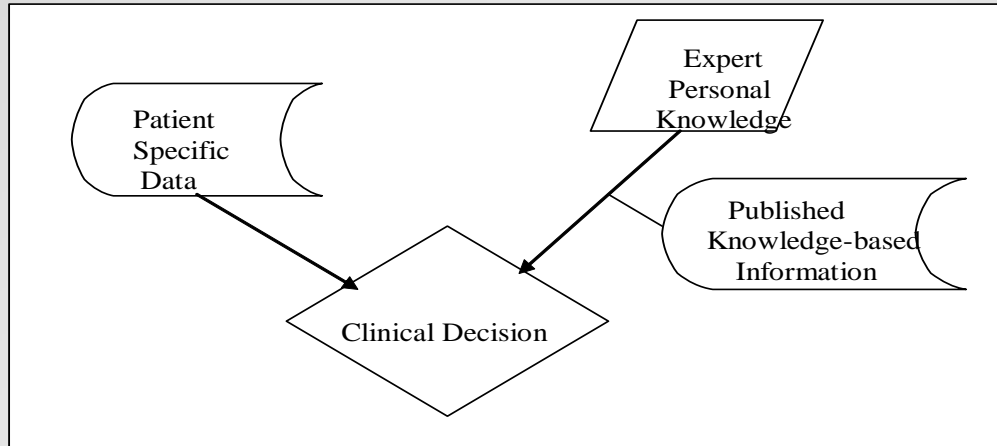
**GÜSSÜN GÜNEŞ**  
International Clinical Librarian Conference  
EAHIL 2015 Workshop , Edinburgh University  
Wednesday 10<sup>th</sup> June



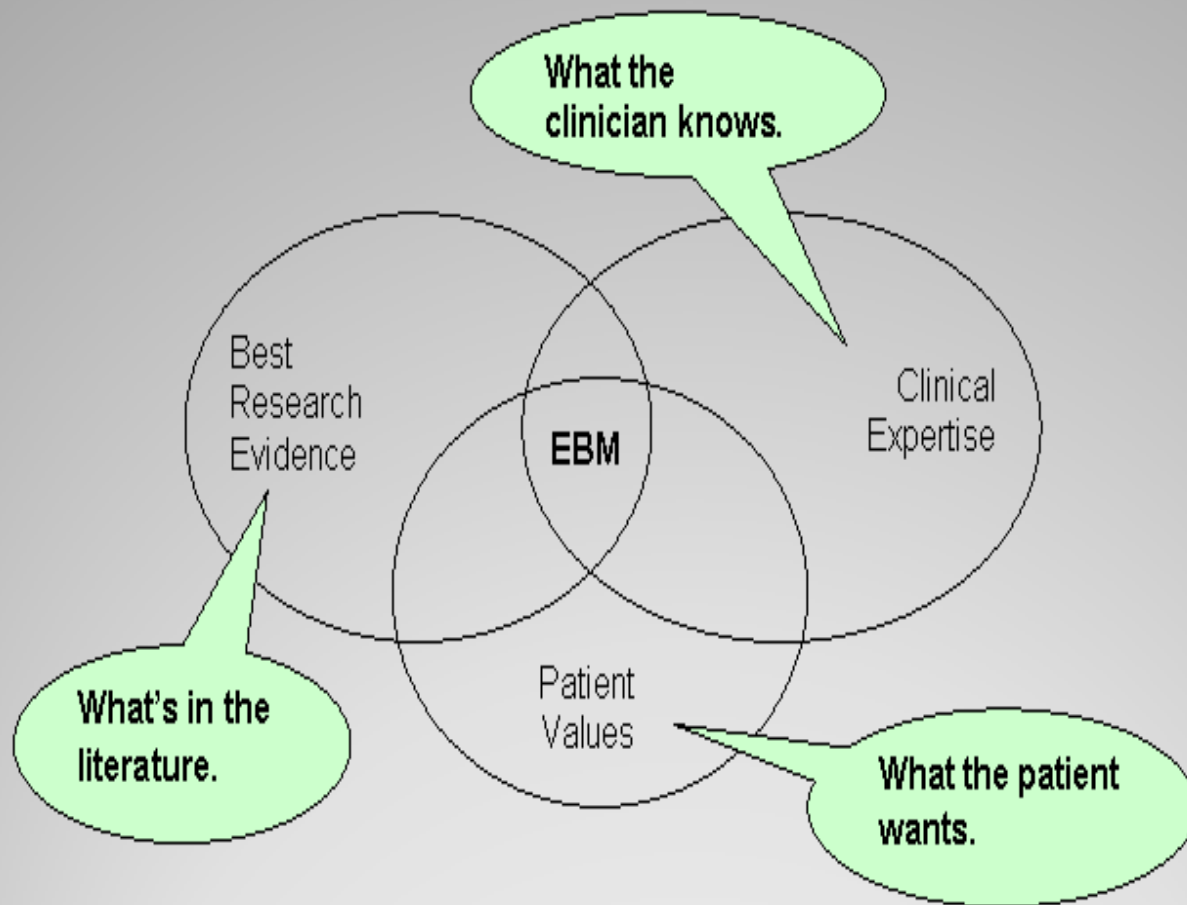
Research-minded:  
supporting, understanding, conducting research

- Evidence Based Nursing Practice (EBNP) and Librarians
- Planning strategies for expert searches in databases
- Role of the Librarian

**Aim of this talk**



# Data Use in Clinical Decisions



# EBM (Evidence Based Medicine)

- Not enough time for a research
- Not enough about literature searching
- Not enough experience understanding literature
- Limited access for nursing resources

**Nurse Researchers**

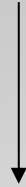
- Research findings
- Information Management
- Clinical decision/problem solving
- Development of professional applications
- Care management

**Evidence Based Practice**

- Clinical question
- Collecting Evidence
- Critically Appraise the evidence
- Integration evidence into the practice
- Evaluating the process

**EBNP (Evidence Based Nursing Practice Process)**

Decision based-on experience



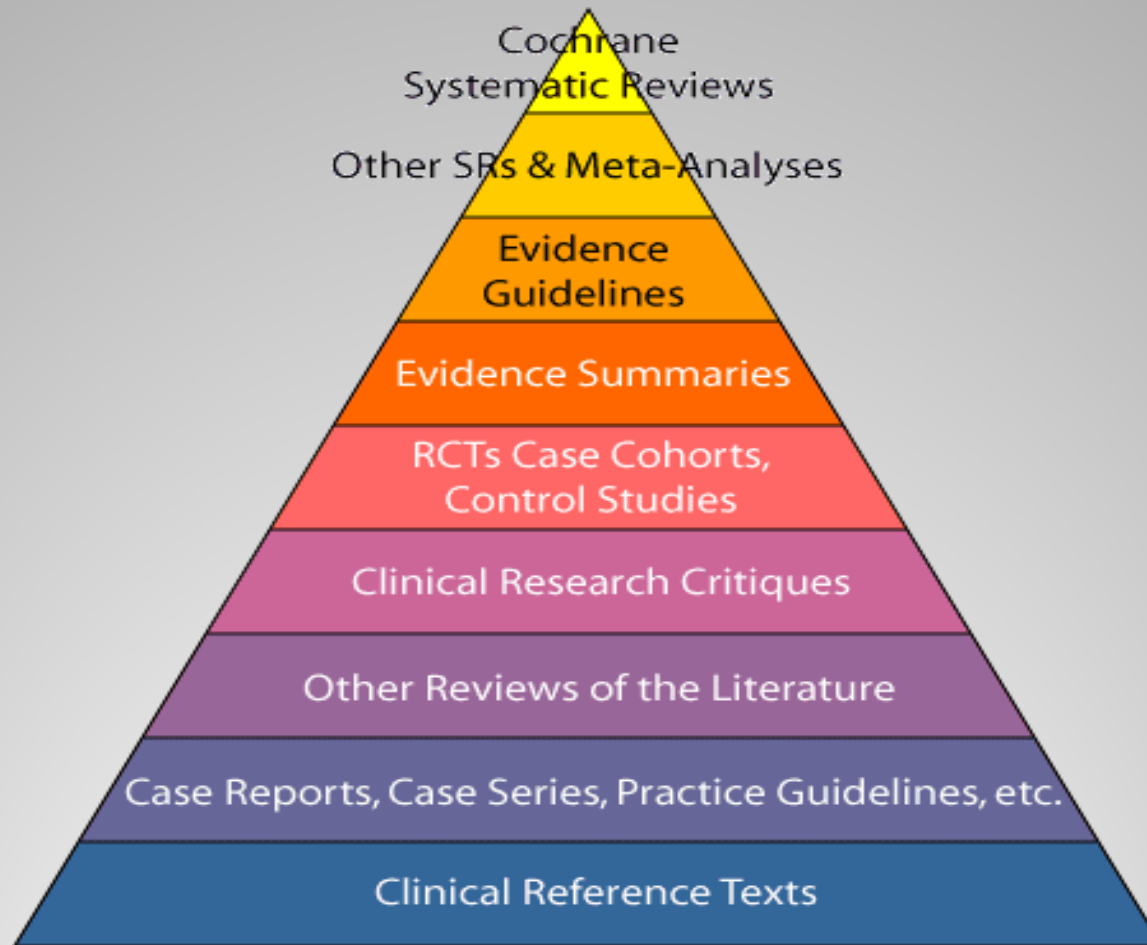
Transition to evidence-based decision-making

**Evidence Based Nursing**

- to transition practice to EBP
- attending research
- implementation of research results to the practices



## Nurses professional roles and responsibility



# Level of Evidence

## JBI Level of Evidence

Level of Evidence	Feasibility, Appropriateness, Meaningfulness	Effectiveness	Economic Analysis
I	Meta-synthesis of research with unequivocal synthesised findings	Meta-analysis (with homogeneity) of experimental studies (e.g. RCT with concealed randomisation)	SR (with homogeneity) of Level 1 economic studies
II	Meta-synthesis of research with credible synthesised findings	One or more RCT, retrospective cohort studies or untreated control groups in RCTS. Retrospective cohort study or follow up of untreated control patients in an RCT	SR (with homogeneity) of Level 2 economic studies Analysis comparing a limited number of alternative outcomes against appropriate cost measurement, and including a sensitivity analysis incorporating clinically sensible variations in important variables
III	a. Meta-synthesis of text/opinion with credible synthesised findings b. One or more single research studies of high quality	Case-series (and poor quality prognostic cohort studies)	Analysis without accurate cost measurement but including a sensitivity analysis incorporating clinically sensible variations in important variables
IV	Expert opinion	Expert opinion, or physiology bench research, or consensus	Expert opinion, or based on economic theory

RCT, randomised controlled trial; SR, systematic review.

Source: Int J Evid Based Healthc 2011;  
9: 346–361

|

**A systematic review of interventions to increase breast cancer screening uptake among Turkish women**

Selda SECGINLI<sup>1</sup>, Nursen O. NAHCIVAN<sup>1</sup>, Gussun GUNES<sup>2</sup>

**Author Affiliations:**

Selda Secginli<sup>1</sup>, PhD, Assistant Professor; Nursen O. Nahcivan<sup>1</sup>, PhD, Professor,

<sup>1</sup>Istanbul University, Florence Nightingale Nursing Faculty, Public Health Nursing

Department, Sisli, Istanbul, Turkey

<sup>2</sup> Marmara University, Departments of Library and Documentation, Goztepe Campus,

Kadikoy, Istanbul, Turkey

- Searching electronic databases (OVID MEDLINE, PUB MED, The Cochrane Library (CENTRAL Register of Controlled Trials) CINAHL® Plus with Full Text, PsycINFO, Web of Science ( Social Science Citation Index & Science Citation Index), Scopus, Google Scholar, ULAKBİM Turkish Medical Index and Council of Higher Education (YÖK) Thesis Center were searched to retrieve articles published between January 2000 and December 2015

## **Supporting Nurse Researchers- Method**

- Only studies with experimental designs were included if uptake was used as an outcome measure of the intervention. The methodological quality of studies was assessed using standardized critical appraisal instruments from the Joanna Briggs Institute Meta Analysis of Statistics Assessment and Review Instrument (JBI-MASARI).

## **Supporting Nurse Researchers- Method**

- The systematic review was conducted in accordance with a predefined research protocol, describing the following systematic processes: search strategy, selection, data extraction and quality assessment. Initially, the search was conducted electronically by a senior medical librarian using the databases

## **Supporting Nurses-search strategy**

- The primary key words of (and their Turkish translations) breast cancer, breast health, breast cancer screening, breast cancer screening behaviors, early detection behaviors, breast self-examination (BSE), clinical breast-examination (CBE), mammography/ mammogram, health beliefs, health belief model, Turkish women, intervention, program, and health education were used for searching. All keywords also verified MESH terms to decide right keywords on advance. For English titles all key words were searched in combination with "and/or" statements within 3 word groups. Search strategy and keywords queried for "Breast cancer OR Breast neoplasms OR breast health OR Breast cancer screening OR Breast cancer screening behavior OR Early detection behavior OR breast self-examination OR Clinical breast examination OR mammography OR mammogram OR Health beliefs OR health belief model " AND "Intervention OR Program OR Health Education" AND "Turkish women" For Turkish titles search using all identified keywords and index terms were undertaken on advance searching but for Turkish database structure's either ULAKBIM Medical Database nor YÖK Thesis Center has limited indexing and the metadata to combine these Turkish keywords. For that reason each keywords also limited on subject base (i.e. Nursing, Public Health, Obstetrics and Gynecology) to get relevant articles and dissertation studies. On Google Scholar searching prepared the advanced search with filtering but Google Scholar also is not enough to provide relevant studies and got many irrelevant results

## Supporting Nurses-search strategy

- Some studies were selected on the the reference lists of all identified papers, reports and articles were searched for additional studies and accessed them through databases or Google, Google scholar and from the databases individual. In the present review study, the criterias included use of (1) studies published between 2000 and 2015, (2) studies published both in English and Turkish, (3) full text articles that were published in a peer-reviewed journal, thesis and dissertations, (4) conducted in Turkey, (5).

## **Supporting Nurses-search strategy**

- The potentially relevant articles were screened by nurses based on study title and abstract, potentially relevant articles were identified and full text copies were obtained for more-detailed evaluation based on this review study's inclusion criterias.

**Supporting Nurses**

- For inclusion interventional studies, and (6) included the outcome variables of breast cancer screening behaviors (mammography, CBE, BSE). The following types of articles were excluded: editorials, commentaries, letters to the editor, reviews, or meta-analyses, articles unrelated to breast cancer screening, conducted outside of the Turkey or non-English or Turkish language papers, non-interventional studies and studies conducted among women with breast cancer diagnosis and which did not report valid outcome measures. Valid outcome measures were defined as having breast self examination and completion of clinical breast examination and mammograms, either by self-report and/or verified by a clinical record in the study.

## **Supporting Nurses-Study selection**

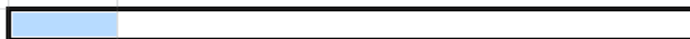
OVID: Boolean/Phrase: Limiters:Full Text,Published Date: 20000101-20151231,Peer Reviewed,Gender:female Language:English	2015
Breast cancer	18
Breast cancer and Turkish	80
Breast cancer or Turkish	0
Breast health	169
Breast health and Turkish	6
Breast health or Turkish	0
Breast cancer screening	1885
Breast cancer screening and Turkish	9
Breast cancer screening or Turkish	0
Breast cancer screening behaviour	1
Breast cancer screening behaviour and Turkish	0
Breast cancer screening behaviour or Turkish	0
Early detection	7098
Early detection and Turkish	1
Early detection or Turkish	0
Clinical breast examination	74
Clinical breast examination and Turkish	0
Clinical breast examination or Turkish	0
Mamogram olarak kabul etmiyor Mammogram doğru terim	194755
Mammogram and Turkish	153
Mammogram or Turkish	0
Health beliefs	322
Health beliefs and Turkish	10
Health beliefs or Turkish	0
Health belief model	11588
Health belief model and Turkish	6
Health belief model or Turkish	0

## Supporting Nurses-Study selection

DATABASE	Breast cancer or Breast neoplasms or breast health or Breast cancer screening or Breast cancer screening behavior or Early detection behavior or breast self-examination or Clinical breast examination or mammography or mammogram or Health beliefs or health belief model	intervention or program or health education	Turkish women	Combination
SCOPUS	1203	332374	2600	10
PUBMED	316064	844462	1727	84
CINAHL	63487	237,607	294	6
COCHRANE	14789	3814	86	4
PSYCHINFO	9338	177,269	258	12
WOS	126666	247,885	544	20
OVID MEDLINE	161869	588241	424	9

**Supporting Nurses-Study selection**

	2015	2012		2015	2012
Breast cancer and Turkish	131	70	Breast cancer or Turkish	136752	57771
Breast health and Turkish	14	10	Breast health or Turkish	15784	8115
Breast cancer screening and Turkish	16	9	Breast cancer screening or Turkish	17489	8828
Breast cancer screening behaviour and Turkish	5	5	Breast cancer screening behaviour or Turkish	13776	7195
Early detection and Turkish	3	1	Early detection or Turkish	23491	10722
Clinical breast examination and Turkish	0	0	Clinical breast examination or Turkish	13839	7329
Mammogram and Turkish	0	0	Mammogram or Turkish	14493	7412
Health beliefs and Turkish	22	15	Health beliefs or Turkish	15230	7851
Health belief model and Turkish	7	5	Health belief model or Turkish	13931	7360
Intervention and Turkish	27	15	Intervention or Turkish	105844	45459
Screening and Turkish	110	66	Screening or Turkish	147368	60016
Program and Turkish	94	51	Program or Turkish	241615	
Training and Turkish	45	27	Training or Turkish	136643	
	474	274			



# Supporting Nurses-Study selection

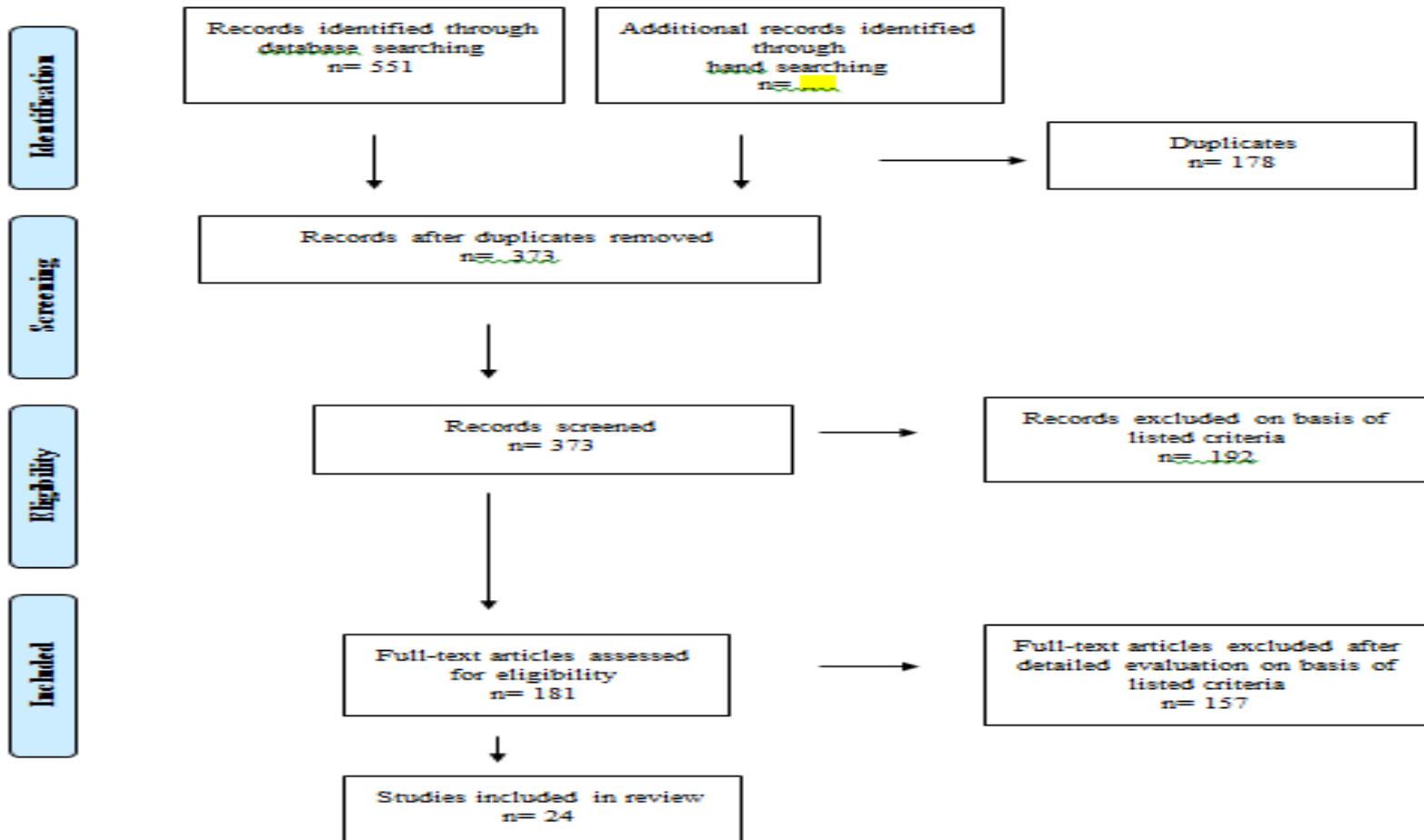
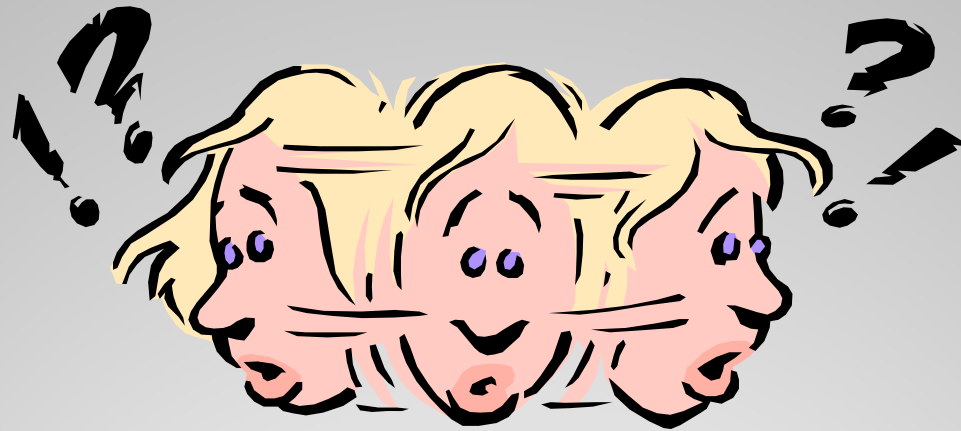


Figure 1. Flow diagram for study selection according to PRISMA

# Supporting Nurses-Study selection

- Guidance on the research
- Searching for reviews
- Help them development of the content
- Conducting search on the databases
- Execution of literature
- Management of search results
- Helping for PRISMA figure
- Review for final draft

**Conclusions**



**Q&A**