

References:

[1] Reich, et al. *Lancet* 2017;390:276–88.

[2] Taylor, et al. *Arthritis Rheum* 2006;54:2665–73.

Disclosure of Interests: Philip J Mease Grant/research support from: Abbott, Amgen, Biogen Idec, BMS, Celgene Corporation, Eli Lilly, Novartis, Pfizer, Sun Pharmaceutical, UCB – grant/research support, Consultant of: Abbott, Amgen, Biogen Idec, BMS, Celgene Corporation, Eli Lilly, Novartis, Pfizer, Sun Pharmaceutical, UCB – consultant, Speakers bureau: Abbott, Amgen, Biogen Idec, BMS, Eli Lilly, Genentech, Janssen, Pfizer, UCB – speakers bureau, Saima Chohan Employee of: Partner/physician at Arizona Arthritis and Rheumatology Associates, Ferran J García Fructuoso Grant/research support from: AbbVie, Eli Lilly, Gedeon Richter, MedImmune, Nichi-Iko, Pfizer, Sanofi-Aventis, Takeda, and UCB, Consultant of: AbbVie, Eli Lilly, Gedeon Richter, MedImmune, Nichi-Iko, Pfizer, Sanofi-Aventis, Takeda, and UCB, Speakers bureau: AbbVie, Eli Lilly, Gedeon Richter, MedImmune, Nichi-Iko, Pfizer, Sanofi-Aventis, Takeda, and UCB, Alice B Gottlieb Grant/research support from: Research grants, consultation fees, or speaker honoraria for lectures from: Pfizer, AbbVie, BMS, Lilly, MSD, Novartis, Roche, Sanofi, Sandoz, Nordic, Celltrion and UCB., Consultant of: Research grants, consultation fees, or speaker honoraria for lectures from: Pfizer, AbbVie, BMS, Lilly, MSD, Novartis, Roche, Sanofi, Sandoz, Nordic, Celltrion and UCB., Speakers bureau: Pfizer, AbbVie, BMS, Lilly, MSD, Novartis, Roche, Sanofi, Sandoz, Nordic, Celltrion and UCB., Michael E Luggen Grant/research support from: AbbVie; Amgen; Eli Lilly; Genentech; Nichi-Iko; Novartis; Pfizer; R-Pharm; and Sun Pharmaceutical Industries, Inc., Consultant of: AbbVie; Amgen; Eli Lilly; Genentech; Nichi-Iko; Novartis; Pfizer; R-Pharm; and Sun Pharmaceutical Industries, Inc., Speakers bureau: AbbVie; Amgen; Eli Lilly; Genentech; Nichi-Iko; Novartis; Pfizer; R-Pharm; and Sun Pharmaceutical Industries, Inc., Proton Rahman Grant/research support from: Janssen and Novartis, Consultant of: Abbott, AbbVie, Amgen, BMS, Celgene, Lilly, Janssen, Novartis, and Pfizer., Speakers bureau: Abbott, AbbVie, Amgen, BMS, Celgene, Lilly, Janssen, Novartis, Pfizer, Siba P Raychaudhuri Grant/research support from: AbbVie; Janssen; Novartis; Pfizer; Sun Pharmaceutical Industries, Inc, Consultant of: Amgen; Eli Lilly; Janssen; Novartis and Pfizer, Richard C Chou Consultant of: Sun Pharmaceutical Industries, Inc, Alan M Mendelsohn Shareholder of: Johnson and Johnson, Employee of: Sun Pharmaceutical Industries, Inc, Stephen Rozzo Employee of: Sun Pharmaceutical Industries, Inc, Ana-Maria Orbai Grant/research support from: Abbvie, Eli Lilly and Company, Celgene, Novartis, Janssen, Horizon, Consultant of: Eli Lilly; Janssen; Novartis; Pfizer; UCB. Ana-Maria Orbai was a private consultant or advisor for Sun Pharmaceutical Industries, Inc, not in her capacity as a Johns Hopkins faculty member and was not compensated for this service.

DOI: 10.1136/annrheumdis-2020-eular.3908

Rheumatoid arthritis - non biologic treatment and small molecules

OP0231

COMPARATIVE EFFECTIVENESS OF JAK-INHIBITORS, TNF-INHIBITORS, ABATACEPT AND IL-6 INHIBITORS IN AN INTERNATIONAL COLLABORATION OF REGISTERS OF RHEUMATOID ARTHRITIS PATIENTS (THE “JAK-POT” STUDY)

K. Lauper¹, D. Mongin¹, S. A. Bergstra², D. Choquette³, C. Codreanu⁴, D. De Cock⁵, L. Dreyer⁶, O. Elkayam⁷, K. Hyrich⁸, F. Iannone⁹, N. Inanc¹⁰, E. Kristianslund¹¹, T. K. Kvien¹¹, B. Leeb¹², G. Lukina¹³, D. Nordström¹⁴, K. Pavelka¹⁵, M. Pombo-Suarez¹⁶, Z. Rotar¹⁷, M. J. Santos¹⁸, A. Strangfeld¹⁹, D. Courvoisier¹, A. Finckh¹. ¹HUG, Geneva, Switzerland; ²LUMC, Rheumatology, Leiden, Netherlands; ³Institut de Recherche en Rhumatologie, Montréal, Canada; ⁴Center of Rheumatic Diseases, Bucharest, Romania; ⁵KU Leuven, Skeletal Biology and Engineering Research Unit, Leuven, Belgium; ⁶Aalborg University Hospital, DANBIO, Aalborg, Denmark; ⁷Tel Aviv University, Rheumatology, Tel Aviv, Israel; ⁸University of Manchester, Centre for Epidemiology Versus Arthritis, Manchester, United Kingdom; ⁹University Hospital of Bari, GISEA, Bari, Italy; ¹⁰Marmara University, Rheumatology, Istanbul, Turkey; ¹¹Diakonhjemmet Hospital, Rheumatology, Oslo, Norway; ¹²State Hospital Stockerau, Rheumatology, Stockerau, Austria; ¹³V.A.Nasonova Research Institute of Rheumatology, Moscow, Russian Federation; ¹⁴Helsinki University, ROB-FIN, Helsinki, Finland; ¹⁵Institute of Rheumatology, Prague, Czech Republic; ¹⁶Hospital Clinico Universitario, Rheumatology, Santiago de Compostela, Spain; ¹⁷biorx.si, Rheumatology, Ljubljana, Slovenia; ¹⁸Faculdade de Medicina, Reuma.pt, Lisboa, Portugal; ¹⁹DRFZ, Programme Area Epidemiology, Berlin, Germany

Background: In many countries, JAK-inhibitors (JAKi) have only recently been approved as treatment for patients with rheumatoid arthritis (RA).

Objectives: To evaluate the effectiveness of JAKi compared to bDMARDs in RA patients in the real-world population in an international collaboration of registers (the “JAK-pot” collaboration).

Methods: Patients initiating either JAKi, TNFi, IL-6i or abatacept (ABA) during a time period when JAKi were available in each country (19 registers, Table) were included. We compared the effectiveness of JAKi and bDMARDs in terms of retention using crude and adjusted survival analysis. Missing covariates were imputed using multiple imputation.

Results: Among 25521 included patients, 6063 initiated a JAKi, 13879 a TNFi, 2348 ABA, and 3231 an IL-6i. Patients were on average 55 years old, with a mean disease duration 10 years, mostly seropositive (67%), female (77%) and with moderate disease activity at treatment initiation. The main reason of stopping treatment was ineffectiveness (49%), followed by adverse events (21%). Patients on JAKi were treated more often as monotherapy, had higher CRP and disease activity at baseline and had experienced more previous ts/bDMARDs. Crude median retention was 1.4 (95% CI 1.2-1.5) years for JAKi, 1.6 (1.6-1.7) for TNFi, 1.5 (1.3-1.7) for IL6i and 1.1 (1.0-1.3) for ABA. After adjustment, the hazard ratio (HR) for discontinuation tended to be lower for JAKi (HR 0.86 (0.65-1.13)) compared to TNFi, but comparable for ABA (1.02 (0.94-1.10)) and IL6i (0.99 (0.88-1.10)) (Figure 1). HRs differed notably between countries (Figure 2).

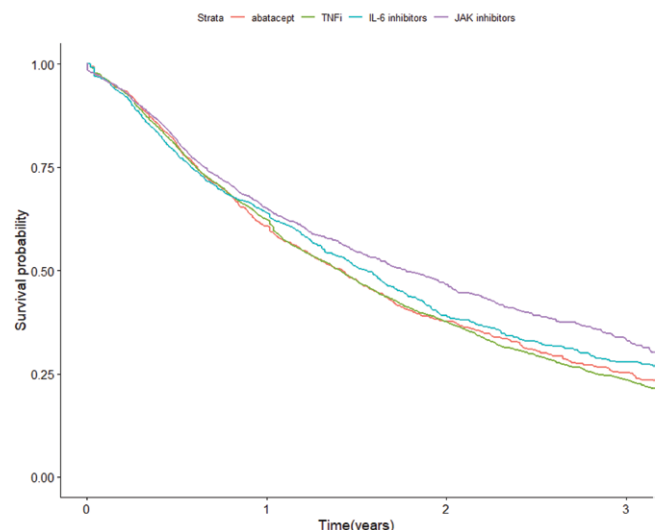
Table 1. Registers

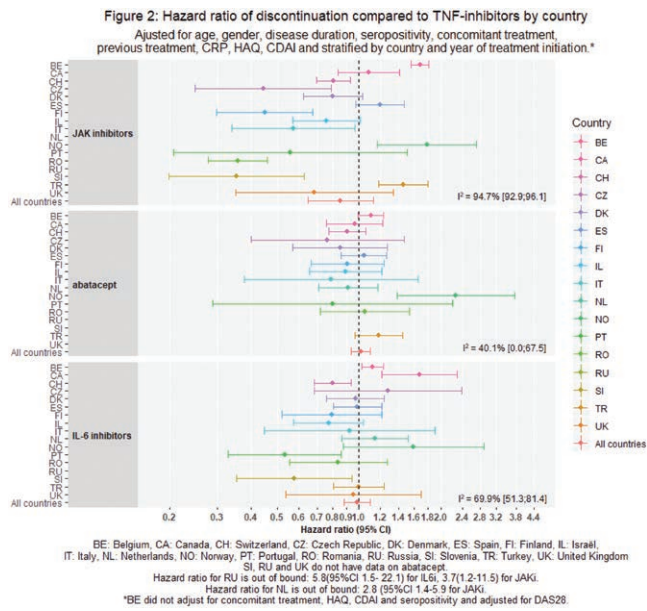
| Country, register | N | JAKi, n (%) |
|-----------------------|------|-------------|
| Austria, BIOREG* | | |
| Belgium, TARDIS | 6288 | 2113 (33.6) |
| Canada, RHUMADATA | 528 | 114 (21.6) |
| Czech Republic, ATTRA | 374 | 253 (67.6) |
| Denmark, DANBIO | 4721 | 506 (10.7) |
| Finland, ROB-FIN | 807 | 234 (29.0) |
| Germany, RABBIT* | | |
| Italy, GISEA | 757 | 250 (33.0) |
| Israel, I-RECORD | 400 | 94 (23.5) |
| Netherlands, METEOR | 1642 | 4 (0.2) |
| Norway, NOR-DMARD | 507 | 99 (19.5) |
| Portugal, REUMA.PT | 797 | 44 (5.5) |
| Romania, RRRB | 593 | 328 (55.3) |
| Russia, ARBITER | 526 | 483 (91.8) |
| Slovenia, BIORX.SI | 583 | 146 (25.0) |
| Spain, BIOBADASER | 781 | 139 (17.8) |
| Switzerland, SCQM | 2956 | 796 (26.9) |
| Turkey, TURKBIO | 2150 | 397 (18.5) |
| UK, BSRBR | 1111 | 63 (5.7) |

*Registers planning to participate in future studies but not included yet

Figure 1: Multivariable Cox model of drug discontinuation by type of treatment

Adjusted for age, gender, disease duration, seropositivity, previous treatment, concomitant treatment, CRP, HAQ, CDAI and stratified by country and year of treatment initiation.





Conclusion: The adjusted overall drug retention of JAKi tended to be higher than for TNFi, with large variation between countries. Other measures of effectiveness, such as the evaluation of CDAI remission and low disease activity are planned to shape a more comprehensive picture of JAKi effectiveness in the real world.

Disclosure of Interests: Kim Lauper: None declared, Denis Mongin: None declared, Sytske Anne Bergstra: None declared, Denis Choquette Grant/research support from: Rhumadata is supported by grants from Pfizer, Amgen, Abbvie, Gylead, BMS, Novartis, Sandoz, eli Lilly., Consultant of: Pfizer, Amgen, Abbvie, Gylead, BMS, Novartis, Sandoz, eli Lilly., Speakers bureau: Pfizer, Amgen, Abbvie, Gylead, BMS, Novartis, Sandoz, eli Lilly., Catalin Codreanu Consultant of: Speaker and consulting fees from AbbVie, Accord Healthcare, Alfasigma, Egis, Eli Lilly, Ewopharma, Genesis, Mylan, Novartis, Pfizer, Roche, Sandoz, UCB, Speakers bureau: Speaker and consulting fees from AbbVie, Accord Healthcare, Alfasigma, Egis, Eli Lilly, Ewopharma, Genesis, Mylan, Novartis, Pfizer, Roche, Sandoz, UCB, Diederik De Cock: None declared, Lene Dreyer: None declared, Ori Elkayam Speakers bureau: AbbVie, BMS, Pfizer, Roche, Sanofi-Aventis, Novartis, Jansen, Kimme Hyrich Grant/research support from: Pfizer, UCB, BMS, Speakers bureau: Abbvie, Florenzo Iannone Consultant of: Speaker and consulting fees from AbbVie, Eli Lilly, Novartis, Pfizer, Roche, Sanofi, UCB, MSD, Speakers bureau: Speaker and consulting fees from AbbVie, Eli Lilly, Novartis, Pfizer, Roche, Sanofi, UCB, MSD, Nevsun Inanc: None declared, Eirik Kristianslund: None declared, Tore K. Kvien Grant/research support from: Received grants from Abbvie, Hospira/Pfizer, MSD and Roche (not relevant for this abstract)., Consultant of: Have received personal fees from Abbvie, Biogen, BMS, Celltrion, Eli Lilly, Hospira/Pfizer, MSD, Novartis, Orion Pharma, Roche, Sandoz, UCB, Sanofi and Mylan (not relevant for this abstract)., Paid instructor for: Have received personal fees from Abbvie, Biogen, BMS, Celltrion, Eli Lilly, Hospira/Pfizer, MSD, Novartis, Orion Pharma, Roche, Sandoz, UCB, Sanofi and Mylan (not relevant for this abstract)., Speakers bureau: Have received personal fees from Abbvie, Biogen, BMS, Celltrion, Eli Lilly, Hospira/Pfizer, MSD, Novartis, Orion Pharma, Roche, Sandoz, UCB, Sanofi and Mylan (not relevant for this abstract)., Burkhart Leeb Grant/research support from: chairman of BioReg, Consultant of: AbbVie, Pfizer, Roche, Lilly, Grünenthal, Celmo., Paid instructor for: Lilly, Biogen, Speakers bureau: Biogen, Lilly, Pfizer, Grünenthal, Astropharma., Galina Lukina Speakers bureau: Novartis, Pfizer, UCB, Abbvie, Biocad, MSD, Roche, Dan Nordström Consultant of: Abbvie, Celgene, Lilly, Novartis, Pfizer, Roche and UCB., Speakers bureau: Abbvie, Celgene, Lilly, Novartis, Pfizer, Roche and UCB., Karel Pavelka Consultant of: Abbvie, MSD, BMS, Egis, Roche, UCB, Medac, Pfizer, Biogen, Speakers bureau: Abbvie, MSD, BMS, Egis, Roche, UCB, Medac, Pfizer, Biogen, Manuel Pombo-Suarez Consultant of: Janssen, Lilly, MSD and Sanofi., Speakers bureau: Janssen, Lilly, MSD and Sanofi., Ziga Rotar Consultant of: Speaker and consulting fees from Abbvie, Amgen, Biogen, Eli Lilly, Medis, MSD, Novartis, Pfizer, Roche, Sanofi., Speakers bureau: Speaker and consulting fees from Abbvie, Amgen, Biogen, Eli Lilly, Medis, MSD, Novartis, Pfizer, Roche, Sanofi., Maria Jose Santos Speakers bureau: Novartis and Pfizer, Anja Strangfeld Speakers bureau: AbbVie, BMS, Pfizer, Roche, Sanofi-Aventis, Delphine Courvoisier: None declared, Axel Finckh Grant/research support from: Pfizer: Unrestricted research grant, Eli-Lilly: Unrestricted research grant, Consultant of: Sanofi, AB2BIO, Abbvie, Pfizer, MSD, Speakers bureau: Sanofi, Pfizer, Roche, Thermo Fisher Scientific

DOI: 10.1136/annrheumdis-2020-eular.346

OP0232 TREATMENT WITH METHOTREXATE AND RISK OF LUNG DISEASE IN PATIENTS WITH RHEUMATOID ARTHRITIS: A NATIONWIDE POPULATION-BASED COHORT STUDY FROM DENMARK

E. Helene Ibfelt¹, R. Kart Jacobsen², T. I. Kopp³, B. Cordtz⁴, A. Svarre Jakobsen⁵, N. Seersholm⁶, S. Burhan Shaker⁶, L. Dreyer^{4,7}. ¹Steno Diabetes Center, Gentofte, Denmark; ²Bispebjerg and Frederiksberg Hospital, Frederiksberg, Denmark; ³Rigshospitalet, Copenhagen, Denmark; ⁴Aalborg University Hospital, Aalborg, Denmark; ⁵Furesø Reumatologerne, Farum, Denmark; ⁶Herlev and Gentofte University Hospital, Hellerup, Denmark; ⁷DANBIO Registry, Denmark, Denmark

Background: Methotrexate (MTX) is the recommended first-line drug in EULAR and ACR treatment guidelines for rheumatoid arthritis (RA) and hence the most commonly prescribed DMARD in the treatment of this group of patients. However, lung disease is considered a potential adverse effect of MTX treatment.

Objectives: To investigate the risk of interstitial lung disease (ILD) and acute and chronic respiratory failure in RA patients treated with MTX and other medications.

Methods: From the Danish National Patient Register (DNPR) and the clinical DANBIO Register for rheumatic diseases, we retrieved data on RA patients registered between 1997 and 2015. Information on ILD and respiratory failure outcomes was obtained from DNPR, and information on redeemed prescriptions for MTX and other medications was obtained through linkage to the Danish Prescription Register. Associations between MTX and lung disease outcomes were analyzed in Cox regression models adjusted for age, calendar time, sex and use of other medications possessing the potential for pulmonary toxicity. Standardized Incidence Ratios (SIRs) of lung disease were calculated to compare RA patients to the general population.

Results: Of the 30,512 RA patients identified, 60% patients had redeemed at least one prescription for MTX, 35% had redeemed a prescription for sulphasalazine, 6% had redeemed a prescription of either amiodarone or

Table. Hazard ratios (HR) with 95% confidence intervals (95%CI) for the risk of interstitial lung disease (ILD) and acute or chronic respiratory failure in 30,512 patients with rheumatoid arthritis up to 5 years after diagnosis.

| ILD (incl. drug-induced cases) | 1 year of follow up | | 5 years of follow up | |
|--|---------------------|---------------------|----------------------|---------------------|
| | Events, N | HR (95% CI) | Events, N | HR (95% CI) |
| Methotrexate, ≥1 redeemed prescription(s) vs. none | 62 | 1.03 (0.71 to 1.48) | 166 | 1.00 (0.78 to 1.27) |
| Sulphasalazine, ≥1 redeemed prescription(s) vs. none | 21 | 0.88 (0.54 to 1.43) | 90 | 1.14 (0.89 to 1.48) |
| Amiodarone and/or nitrofurantoin, ≥1 redeemed prescription(s) vs. none | 1 | 0.57 (0.08 to 4.10) | 7 | 0.65 (0.31 to 1.38) |
| Women | 72 | Ref. | 155 | Ref. |
| Men | 55 | 1.51 (1.06 to 2.16) | 130 | 1.74 (1.38 to 2.21) |

| Acute or chronic respiratory failure | 1-year of follow up | | 5-years of follow up | |
|--|---------------------|---------------------|----------------------|---------------------|
| | Events, N | HR (95% CI) | Events, N | HR (95% CI) |
| Methotrexate, ≥1 redeemed prescription(s) vs. none | 36 | 0.48 (0.32 to 0.73) | 158 | 0.54 (0.43 to 0.67) |
| Sulphasalazine, ≥1 redeemed prescription(s) vs. none | 14 | 0.70 (0.39 to 1.26) | 99 | 1.09 (0.86 to 1.38) |
| Amiodarone and/or nitrofurantoin, ≥1 redeemed prescription(s) vs. none | 6 | 3.01 (1.31 to 6.94) | 22 | 1.33 (0.86 to 2.06) |
| Women | 71 | Ref. | 239 | Ref. |
| Men | 38 | 1.07 (0.72 to 1.59) | 120 | 1.04 (0.83 to 1.29) |