



ELSEVIER

European Journal of Cardio-thoracic Surgery 25 (2004) 645

EUROPEAN JOURNAL OF
CARDIO-THORACIC
SURGERY

www.elsevier.com/locate/ejcts

Images in cardio-thoracic surgery

Concomitant aneurysms of the coronary arteries with a fistula draining into the right ventricular intramural hemangioma

Sinan Arsan^{a,*}, Serdar Akgun^a, Ismet Dindar^b

^aDepartment of Cardiovascular Surgery, Academic Hospital, Marmara University School of Medicine Foundation, Istanbul, Turkey

^bDepartment of Cardiology, Safak Hospital, Istanbul, Turkey

Received 1 November 2003; accepted 9 January 2004

Keywords: Coronary; Aneurysm; Fistula; Hemangioma

Coronary arteriography of a 72-year-old woman revealed prominent aneurysms of left main coronary, left anterior descending and right coronary arteries with a fistula

from the left and right coronary systems draining into the right ventricular intramural hemangioma (Figs. 1 and 2).

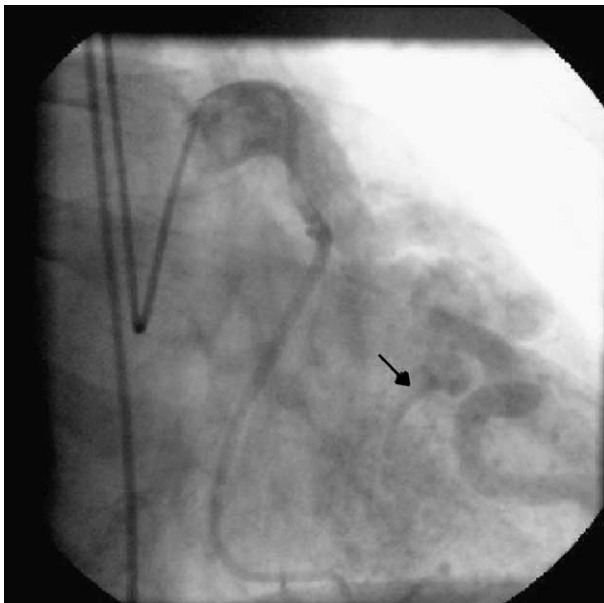


Fig. 1. Aneurysms of left main trunk and left anterior descending artery with normal appearance of circumflex artery; arrow indicates the distal fistula tract draining into right ventricle.

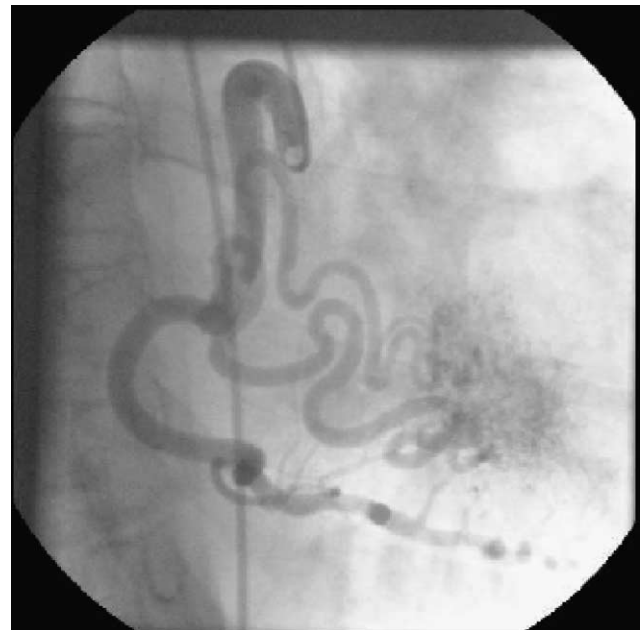


Fig. 2. Aneurysms of right coronary trunk and sinoatrial and conus branches draining into right ventricle.

* Corresponding author. 37 Ada Inci-1 Blok D. 29, Atasehir, 34758, Istanbul, Turkey. Tel.: +90-216-455-9353; fax: +90-216-455-9388.
E-mail address: sinanarsan@superonline.com (S. Arsan).