



# Guideline adherence and survival of patients with candidaemia in Europe: results from the ECMM Candida III multinational European observational cohort study

Martin Hoenigl, Jon Salmanton-García, Matthias Egger, Jean-Pierre Gangneux, Tihana Bicanic, Sevtap Arikan-Akdagli, Ana Alastruey-Izquierdo, Nikolai Klimko, Aleksandra Barac, Volkan Özenci, Eelco F J Meijer, Nina Khanna, Matteo Bassetti, Riina Rautemaa-Richardson, Katrien Lagrou, Kai-Manuel Adam, Emin Halis Akalin, Murat Akova, Valentina Arsic Arsenijevic, Avinash Aujayeb, Ola Blennow, Stéphane Bretagne, François Danion, Blandine Denis, Nick Alexander de Jonge, Guillaume Desoubeaux, Lubos Drgona, Nurettin Erben, Andrea Gori, Julio García Rodríguez, Carolina Garcia-Vidal, Daniele Roberto Giacobbe, Anna L Goodman, Petr Hamal, Helena Hammarström, Cristina Toscano, Fanny Lanternier, Cornelia Lass-Flörl, Deborah E A Lockhart, Thomas Longval, Laura Loughlin, Tadeja Matos, Malgorzata Mikulska, Manjusha Narayanan, Sonia Martín-Pérez, Juergen Prattes, Benedict Rogers, Laman Rahimli, Maite Ruiz, Emmanuel Roilides, Michael Samarkos, Ulrike Scharmann, Uluhan Sili, Oguz Resat Sipahi, Alena Sivakova, Joerg Steinmann, Janina Trauth, Ozge Turhan, Jens Van Praet, Antonio Vena, P Lewis White, Birgit Willinger, Anna Maria Tortorano, Maiken C Arendrup, Philipp Koehler\*, Oliver A Cornely\*, on behalf of the ECMM Candida III Study Group†

## Summary

**Background** The European Confederation of Medical Mycology (ECMM) collected data on epidemiology, risk factors, treatment, and outcomes of patients with culture-proven candidaemia across Europe to assess how adherence to guideline recommendations is associated with outcomes.

**Methods** In this observational cohort study, 64 participating hospitals located in 20 European countries, with the number of eligible hospitals per country determined by population size, included the first ten consecutive adults with culture-proven candidaemia after July 1, 2018, and entered data into the ECMM *Candida* Registry (FungiScope *CandiReg*). We assessed ECMM Quality of Clinical Candidaemia Management (EQUAL *Candida*) scores reflecting adherence to recommendations of the European Society of Clinical Microbiology and Infectious Diseases and the Infectious Diseases Society of America guidelines.

**Findings** 632 patients with candidaemia were included from 64 institutions. Overall 90-day mortality was 43% (265/617), and increasing age, intensive care unit admission, point increases in the Charlson comorbidity index score, and *Candida tropicalis* as causative pathogen were independent baseline predictors of mortality in Cox regression analysis. EQUAL *Candida* score remained an independent predictor of mortality in the multivariable Cox regression analyses after adjusting for the baseline predictors, even after restricting the analysis to patients who survived for more than 7 days after diagnosis (adjusted hazard ratio 1.08 [95% CI 1.04–1.11;  $p < 0.0001$ ] in patients with a central venous catheter and 1.09 [1.05–1.13;  $p < 0.0001$ ] in those without one, per one score point decrease). Median duration of hospital stay was 15 days (IQR 4–30) after diagnosis of candidaemia and was extended specifically for completion of parenteral therapy in 100 (16%) of 621 patients. Initial echinocandin treatment was associated with lower overall mortality and longer duration of hospital stay among survivors than treatment with other antifungals.

**Interpretation** Although overall mortality in patients with candidaemia was high, our study indicates that adherence to clinical guideline recommendations, reflected by higher EQUAL *Candida* scores, might increase survival. New antifungals, with similar activity as current echinocandins but with longer half-lives or oral bioavailability, are needed to reduce duration of hospital stay.

**Funding** Scynexis.

**Copyright** © 2023 Elsevier Ltd. All rights reserved.

## Introduction

Invasive candidiasis including candidaemia remains the most frequent invasive fungal infection in the hospital setting, affecting male and female patients alike,<sup>1</sup> with around 700 000 cases of invasive candidiasis occurring globally per year,<sup>2</sup> 7.07 episodes per 1000 intensive care unit (ICU) admissions in Europe,<sup>3</sup> and an estimated overall pooled annual incidence rate of 3.88 per

100 000 population in Europe.<sup>4</sup> Known risk factors for developing invasive candidiasis in the ICU include (abdominal) surgery; total parenteral nutrition; renal replacement therapy; central venous catheter (CVC); broad spectrum antibiotics; diabetes; neutropenia; solid organ transplantation; clinically significant liver, respiratory, or cardiovascular disease; and intravenous drug use.<sup>5–7</sup>

*Lancet Infect Dis* 2023

Published Online

February 15, 2023

[https://doi.org/10.1016/S1473-3099\(22\)00872-6](https://doi.org/10.1016/S1473-3099(22)00872-6)

See Online/Comment

[https://doi.org/10.1016/S1473-3099\(23\)00046-4](https://doi.org/10.1016/S1473-3099(23)00046-4)

\*Joint last authors

†Members listed at the end of the Article

Division of Infectious Diseases, Department of Internal Medicine (Prof M Hoenigl MD, M Egger MD, J Prattes MD), Translational Medical Mycology Research Unit, European Confederation of Medical Mycology Excellence Center for Medical Mycology (Prof M Hoenigl, M Egger, J Prattes), Medical University of Graz, Graz, Austria; BioTechMed, Graz, Austria (Prof M Hoenigl, J Prattes); Cologne Excellence Cluster on Cellular Stress Responses in Aging-Associated Diseases (J Salmanton-García PhD, L Rahimli MD, P Koehler MD, Prof O A Cornely MD), Clinical Trials Centre Cologne (ZKS Köln) (Prof O A Cornely), Department I of Internal Medicine, Center for Integrated Oncology Aachen Bonn Cologne Duesseldorf, and European Confederation of Medical Mycology Excellence Center for Medical Mycology (J Salmanton-García, J Prattes, L Rahimli, P Koehler, Prof O A Cornely), Centre for Molecular Medicine Cologne (Prof O A Cornely), Faculty of Medicine and University Hospital Cologne

(J Salmanton-García, L Rahimli, P Koehler, Prof O A Cornely), University of Cologne, Cologne, Germany; Univ Rennes, CHU Rennes, Inserm, EHESP, Irset (Institut de recherche en santé, environnement et travail), UMR\_S 1085, Rennes, France (Prof J-P Gangneux MD); Institute of Infection and Immunity, St George's University of London, London, UK (T Bicanic MD); Department of Medical Microbiology (Prof S Arikan-Akdagli MD) and Department of Infectious Diseases and Clinical Microbiology (Prof M Akova MD), Hacettepe University Medical School, Ankara, Türkiye; Mycology Reference Laboratory, National Centre for Microbiology, Instituto de Salud Carlos III, Madrid, Spain (A Alastruey-Izquierdo PhD); Department of Clinical Mycology, Allergy and Immunology, North Western State Medical University, St Petersburg, Russia (Prof N Klimko MD); Clinic for Infectious and Tropical Diseases, University Clinical Center of Serbia (A Barac MD) and Medical Mycology Reference Laboratory, Institute of Microbiology and Immunology (V Arsic Arsenijevic MD), Faculty of Medicine, University of Belgrade, Belgrade, Serbia; Division of Clinical Microbiology, Department of Laboratory Medicine, Karolinska Institute, Stockholm, Sweden (Prof V Özenci MD); Department of Clinical Microbiology (Prof V Özenci) and Department of Infectious Diseases (O Blennow MD), Karolinska University Hospital, Stockholm, Sweden; Department of Medical Microbiology and Infectious Diseases, Canisius-Wilhelmina Hospital (CWZ), Nijmegen, Netherlands (E F J Meijer MD); Center of Expertise in Mycology Radboudumc/CWZ, Nijmegen, Netherlands (E F J Meijer); Department of Medical Microbiology, Radboud University Medical Center, Nijmegen, Netherlands (E F J Meijer); Division of Infectious Diseases and Hospital Epidemiology, University Hospital of Basel, Basel, Switzerland

## Research in context

### Evidence before this study

Despite advances in management including improved central venous catheter management, candidaemia remains associated with high mortality. International guidelines for the diagnosis and management of candidaemia were created by the European Society for Clinical Microbiology and Infectious Diseases and the Infectious Diseases Society of America, with the ultimate goal of improving patient outcomes and survival, but whether these improvements actually occur (eg, also for first-line treatment with echinocandins) has not been comprehensively assessed. In 2018, the European Confederation of Medical Mycology (ECMM) introduced the EQUAL *Candida* score (ie, an ECMM score to measure quality of clinical candidaemia management), allowing for quantification of guideline adherence as a surrogate marker for the quality of diagnostic and therapeutic management. Although the score was predictive of mortality in subgroups of people with candidaemia in a few, small, single-centre studies, we did not find larger multicentre assessments on whether the score and individual guideline recommendations (ie, score variables) were separately associated with clinical outcomes. We searched PubMed for articles published in English between Jan 1, 2012, and Sept 1, 2022. Search terms included “(Candida\* OR candidemia\*) AND (EQUAL OR guideline OR recommendations OR guidance)”. We also searched the reference lists of all relevant publications for additional reports and included those we deemed appropriate.

### Added value of this study

This study collected data on epidemiology, risk factors, treatment, and outcomes of patients with culture-proven candidaemia from 64 institutions in 20 European countries to assess how adherence to guideline recommendations correlates with outcomes. Patient enrolment per country and number of participating centres were stratified by population size. Overall 90-day mortality was 43%. Increasing age, intensive care unit

(ICU) admission, point increases in the Charlson comorbidity index score, and *Candida tropicalis* as causative pathogen were independent baseline predictors of mortality in Cox regression analyses. Lower EQUAL *Candida* scores, reflecting less adherence to guideline recommendations, were an independent predictor of mortality in the multivariable Cox regression analyses after adjusting for all significant baseline predictors: for a one score point decrease, adjusted hazard ratios were 1.08 (95% CI 1.04–1.11;  $p < 0.0001$ ) in patients with a central venous catheter and 1.09 (1.05–1.13;  $p < 0.0001$ ) in patients without a central venous catheter. Not-performing or not-completing each diagnostic or therapeutic measure (including initial echinocandin treatment) was associated with increased mortality compared with mortality in the overall cohort, emphasising the importance of every single guideline recommendation in the successful management of candidaemia. Initial echinocandin treatment was associated with longer duration of hospital stay among survivors.

### Implications of all the available evidence

Although across Europe 90-day mortality in adults with candidaemia remains high at 43%, adherence to clinical guideline recommendations might increase survival. Notably, more controversial guideline recommendations, such as performance of ophthalmoscopy or echocardiography, are also associated with increased survival. Treatment with echinocandins might not only be associated with increased overall survival but also longer duration of hospital stay, causing extended hospitalisation solely for completing parenteral therapy in one of seven patients with candidaemia, due to the fact that no oral alternatives to azoles are available. This limitation could be overcome by new antifungals with oral bioavailability (eg, ibrexafungerp) or longer half-lives (eg, rezafungin), which could allow for earlier discharge and outpatient therapy.

Despite advances in management, including first-line treatment with echinocandins and improved CVC management, invasive candidiasis remains associated with high mortality.<sup>8</sup> Of approximately 79 cases occurring in Europe per day, an estimated 29 (37%) patients are expected to have a fatal outcome at day 30 after diagnosis.<sup>4</sup> Predictors of mortality due to candidaemia include increasing age, primary source (ie, unrelated to CVC), and sepsis or septic shock.<sup>9</sup> By contrast, early adequate antifungal treatment is efficacious,<sup>9</sup> as is consultation by an infectious diseases specialist (hazard ratio [HR] 0.81 [95% CI 0.73–0.91];  $p < 0.0001$ ) after propensity score weighting.<sup>10</sup>

International guidelines for the diagnosis and management of candidaemia were created with the ultimate goal of improving patient outcomes and survival, but whether these improvements actually occur

has been rarely assessed. In 2018, the European Confederation of Medical Mycology (ECMM) introduced the EQUAL scores (ie, ECMM scores to measure quality of disease management), allowing for quantification of guideline adherence as a surrogate marker for the quality of diagnostic and therapeutic management; the EQUAL *Candida* score was the first score published.<sup>11</sup> The score was derived from recommendations of the two most prominent guidelines for candidaemia, the European Society for Clinical Microbiology and Infectious Diseases (ESCMID) guideline,<sup>12</sup> and the Infectious Diseases Society of America (IDSA) guideline.<sup>13</sup>

In single-centre studies in the past 5 years, the EQUAL *Candida* score<sup>11</sup> predicted mortality in CVC-associated candidaemia in general,<sup>14</sup> and candidaemia caused by *Candida tropicalis*;<sup>15</sup> however, larger multicentre assessments have not been done yet.

Therefore, the ECMM<sup>16</sup> has designed and completed the *Candida* III study—its third pan-European multicentre *Candida* study from 1997 to 2022,<sup>17,18</sup> to collect data on epidemiology, risk factors, treatment, and outcomes of patients with culture-proven candidaemia across Europe. The objective of the study was to assess how adherence to guideline recommendations for managing candidaemia is associated with outcomes. In this Article, we report the findings obtained from the *Candida* III study.

## Methods

### Study design and participating centres

For this European multicentre observational cohort study, each participating hospital included the first ten consecutive adults with blood culture-proven candidaemia after July 1, 2018. Candidaemia was defined according to ESCMID criteria.<sup>19</sup> The primary objective was to assess how adherence to guideline recommendations is associated with outcomes. Secondary objectives included the assessment of epidemiology, risk factors, treatment, and outcomes of patients with candidaemia across Europe.

To give a complete picture of the epidemiology of candidaemia in Europe, the target number of eligible hospitals per country was determined by population size. As guidance, up to a maximum of eight hospitals were invited to contribute for each of the six ECMM countries with populations of 50 million or more (ie, France, Germany, Italy, Russia, Türkiye, and the UK); up to a maximum of four hospitals for each ECMM country with populations of 25 million or more and less than 50 million (ie, Poland and Spain); and up to two hospitals for each of the remaining 19 ECMM countries with populations less than 25 million (ie, Austria, Belarus, Belgium, Czechia, Croatia, Denmark, Estonia, Greece, Ireland, the Netherlands, Norway, Portugal, Romania, Hungary, Serbia, Slovakia, Slovenia, Sweden, and Switzerland). However, hospitals in seven countries (Croatia, Denmark, Estonia, Norway, Poland, Romania, and Hungary), although eligible, did not participate in the study. Hospitals were recruited by ECMM council representatives of each participating country, or via the COVID-19 in Hematological Malignancies (EPICOVIDEHA)<sup>20</sup> and FungiScope<sup>21</sup> networks and among the ECMM Global Guidelines contributor and fellow groups.<sup>16</sup>

Between July 1, 2018, and March 31, 2022, participating centres entered data into the ECMM *Candida* Registry (FungiScope *CandiReg*; NCT01731353), which was described previously.<sup>21,22</sup> The registry was accessible through an online platform provided by EFS Fall 2018 (Questback, Cologne, Germany). Data included patient demographics, risk factors, and characteristics; duration of hospital stay (maximum duration of follow-up 90 days); diagnostic procedures; causative *Candida* spp; treatment characteristics, including antifungal treatment and whether hospital stay was extended only for

completion of parenteral antifungal treatment; and clinical outcomes.

The study was done in accordance with the ethical standards laid down in the 1964 Declaration of Helsinki and its later amendments. For the ECMM *Candida* Registry, retrospective data entry, and data analysis, a central ethical approval was obtained at the University of Cologne (Cologne, Germany; EK 17-485), indicating that, generally, neither informed consent nor institutional review board approval individual to each participating hospital would be required. However, each participating hospital was required to obtain local institutional review board confirmation or approval as deemed necessary by local regulations or authorities.

### Statistical analysis

We did all statistical analyses using IBM SPSS Statistics 25 and R, version 4.3.1. We used descriptive statistics for the analysis of most variables, including distribution of *Candida* spp and extended hospital stay for parenteral antifungal treatment. We assessed EQUAL *Candida* scores<sup>11</sup> reflecting adherence to recommendations of ESCMID and IDSA guidelines for patients for whom data were available, whereas we excluded patients and did not calculate the corresponding EQUAL *Candida* scores when case data were not given for one or more score variables. We presented data as frequencies, percentages, or median (IQR) values, as appropriate. We tested categorical data using  $\chi^2$ , or Fisher's exact test if one of the observed frequencies in the two-by-two contingency table was less than five. We summarised continuous variables using median (IQR) values and we compared groups with Student's *t* test (two groups) or ANOVA (three or more groups) when data were normally distributed, or with Mann-Whitney test (two groups) or Kruskal-Wallis test (three or more groups) when data were not normally distributed. Two-sided *p* values less than 0.05 were used as the cutoff for statistical significance.

Further analyses on EQUAL *Candida* scores were restricted to patients with candidaemia with follow-up data of 7 days or more after diagnosis, to exclude patients in whom earlier mortality or loss to follow-up might have precluded treating physicians from implementing measures recommended in the guidelines, and thereby potentially biasing our results towards lower scores in non-survivors. The ratio scores—that is, the actual EQUAL *Candida* scores divided by the maximum achievable EQUAL *Candida* score (19 for patients without CVC and 22 for those with CVC)—were used to calculate a proportion of the maximum achievable points for each patient and compared between survivors and non-survivors. For these EQUAL *Candida* score proportions, we plotted a receiver operating characteristic (ROC) curve and calculated area under the curve (AUC) values. We determined optimal cutoff using the Youden index.

To investigate the association of baseline risk factors with survival, univariable and multivariable Cox

(N Khanna MD, K-M Adam MD); Department of Health Sciences (DISSAL), University of Genoa, Genoa, Italy (Prof M Bassetti MD, D R Giacobbe MD, Prof M Mikulska MD, A Vena PhD); Infectious Diseases Unit, IRCCS Ospedale Policlinico San Martino, Genoa, Italy (Prof M Bassetti, D R Giacobbe, Prof M Mikulska, A Vena); Mycology Reference Centre Manchester and Department of Infectious Diseases, Wythenshawe Hospital, Manchester University NHS Foundation Trust, Manchester, UK (R Rautemaa-Richardson MD); Division of Evolution, Infection and Genomics, Faculty of Biology, Medicine and Health, University of Manchester, Manchester, UK (R Rautemaa-Richardson); Laboratory of Clinical Microbiology, Department of Microbiology, Immunology and Transplantation, KU Leuven, Leuven, Belgium (Prof K Lagrou PharmD); Department of Laboratory Medicine and National Reference Center for Mycosis, UZ Leuven, Leuven, Belgium (Prof K Lagrou); Department of Infectious Diseases and Clinical Microbiology, Faculty of Medicine, Bursa Uludağ University, Bursa, Türkiye (Prof E Halis Akalin MD); Centre for Microbiology, Institute of Public Health of Vojvodina, Novi Sad, Serbia (V Arsic Arsenijevic); Northumbria Healthcare NHS Foundation Trust, North Shields, UK (A Aujayeb MD); Laboratory of Parasitology and Mycology, Saint Louis University Hospital (Prof S Bretagne MD), Department of Infectious Diseases, Hôpital Saint-Louis, Fernand Widal, Lariboisière (B Denis MD), and Paris Cité Université, Necker Hospital (Prof F Lanterrier MD), Assistance Publique-Hôpitaux de Paris, Paris, France; Department of Infectious Diseases, Centre Hospitalier Universitaire de Strasbourg, Université de Strasbourg, Strasbourg, France (F Danion MD); Department of Hematology, Amsterdam University Medical Centers, Amsterdam, Netherlands (N A de Jonge MD); Department

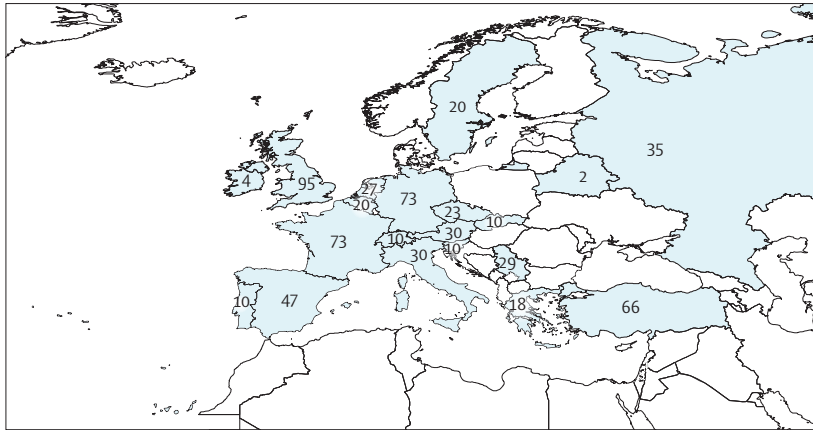


Figure 1: Participating European countries and associated number of included cases

of Parasitology-Mycology-Tropical Medicine, Centre Hospitalier Régional Universitaire de Tours, Tours, France (Prof G Desoubeaux MD); Department of Oncohematology, Comenius University and National Cancer Institute, Bratislava, Slovakia (L Drgona MD); Department of Infectious Disease and Clinical Microbiology, Faculty of Medicine, Eskisehir Osmangazi University, Eskisehir, Türkiye (N Erben MD); Department of Internal Medicine, Infectious Diseases Unit, Fondazione IRCCS Ca' Granda Ospedale Maggiore Policlinico, Milan, Italy (A Gori MD); Department of Pathophysiology and Transplantation and Centre for Multidisciplinary Research in Health Science (MACH), University of Milan, Milan, Italy (A Gori); Microbiology Department, La Paz University Hospital, Madrid, Spain (J García Rodríguez PhD); Department of Infectious Diseases, Hospital Clinic de Barcelona, Barcelona, Spain (C García-Vidal MD); Department of Infection, Guy's and St Thomas' NHS Foundation Trust, London, UK (A L Goodman MD); Medical Research Council Clinical Trials Unit, University College London, London, UK (A L Goodman); Department of Microbiology, Faculty of Medicine and Dentistry, Palacký University Olomouc, Olomouc, Czech Republic (P Hamal MD); Department of Infectious Diseases, Institute of Biomedicine, Sahlgrenska Academy, University of

proportional hazard models (non-overlapping and non-mutually exclusive variables with  $p < 0.1$  included) were estimated for patients without missing data on duration of follow-up, with duration of follow-up capped at day 180. Causative *Candida* spp was the only variable that differed between the multivariable models; *C tropicalis* was included as a variable in one of these models, whereas, for the second model, emerging *Candida* spp that have been previously defined<sup>23</sup> (ie, *C kefyr*, *C guilliermondii*, *C lusitanae*, *C dubliniensis*, *C famata*, *C inconspicua*, *C rugosa*, and *C norvegensis*) were grouped together with *C auris* into the variable *C auris* and other emerging *Candida* spp. The proportional hazard assumption was evaluated by fitting an interaction between a variable of interest and linear follow-up time. We used the Akaike information criterion to compare the relative quality of multivariable Cox models for baseline risk factors.

We then used a multivariable Cox proportional hazards model to measure the relative hazard for death between different EQUAL *Candida* scores when adjusting for significant baseline prognostic factors in patients who survived for more than 7 days and who had data on duration of follow-up available. Lastly, we estimated multivariable Cox models for each variable of the EQUAL *Candida* score adjusted for significant baseline risk factors.

The proportional hazard assumption was tested with the Schoenfeld residuals test for the overall model and individual covariates. The resultant model and all other Cox models did not violate the proportional hazard assumption for individual covariates or the global model. Because candidaemia diagnosis was the starting point for follow-up and the primary effect of interest (EQUAL *Candida* score), and because all other covariates were established at baseline, immortal time bias was not considered.

#### Role of the funding source

The funder of the study had no role in study design, data collection, data analysis, data interpretation, or writing of the report.

## Results

632 patients with candidaemia were included from 64 institutions in 20 European countries (figure 1; appendix pp 10–11). The study flow is depicted in figure 2. Patients' demographic and clinical characteristics, risk factors, treatment, and outcomes, as well as distribution of *Candida* spp in the overall study cohort, in the survivors group, and in the non-survivors group, are separately detailed in the appendix (pp 12–15). The majority of patients (368/632 [58%]) were male and the median age was 65 years (IQR 53–73). Underlying haematological or oncological malignancy (247/632 [39%]), ICU admission (234/632 [37%]), and recent major surgery (164/632 [26%]) were the most common risk factors for candidaemia. Candidaemia was classified as catheter-related bloodstream infection in 130 (21%) of 632 patients. 224 (35%) of 632 patients underwent echocardiography, with cardiac involvement reported in 25 (11%) of 224 patients examined. 169 (27%) of 632 patients received an eye examination (ophthalmoscopy), with ocular involvement reported in 19 (11%) of 169 patients examined. Overall mortality was 46% (286/617; for 15 patients, survival status was unknown); in 77 (37%) of 209 patients who died, investigators attributed death to candidaemia (for the remaining 77 patients, investigators indicated death as unknown or left the field empty); 30-day mortality was 38% (232/617), 90-day mortality 43% (265/617), and 180-day mortality 45% (278/617). Median duration of hospital stay was 15 days (IQR 4–30) after the diagnosis of candidaemia. 502 (81%) of 620 patients with available data received treatment consultation by an infectious diseases or microbiology expert and echinocandins were the first-line antifungal treatment in 353 (56%) of 632 patients. Among survivors, initial echinocandin treatment was associated with longer duration of hospital stay (median 24 days [IQR 15–40]) than initial treatment with other antifungals, such as azoles (16 days [7–33];  $p < 0.0001$ ). In patients in whom candidaemia was treated for at least 14 days ( $n=306$ ), 239 (78%) survived, compared with 67 (66%) of 102 patients who were treated for less than 14 days, but who survived beyond day 14 after diagnosis ( $p=0.01$ ). Hospital stay was extended specifically for the purpose of completing parenteral antifungal treatment in 100 (16%) of 621 patients by a median of 14 days (IQR 3–23). *C albicans* was the most common causative pathogen (287/621 [46%]), followed by *C glabrata* (133/621 [21%]), *C parapsilosis* (83/621 [13%]), *C tropicalis* (46/621 [7%]), *C krusei* (16/621 [3%]), and *C auris* (16/621 [3%]).

Informed by univariable Cox regression modelling (table 1), we fitted two multivariable Cox regression models consisting of three non-overlapping, non-mutually exclusive baseline predictors of mortality: increasing age, Charlson comorbidity index score (excluding age), and ICU admission. Furthermore, an additional predictor was included in each of the two models: *C tropicalis* as causative pathogen in the first

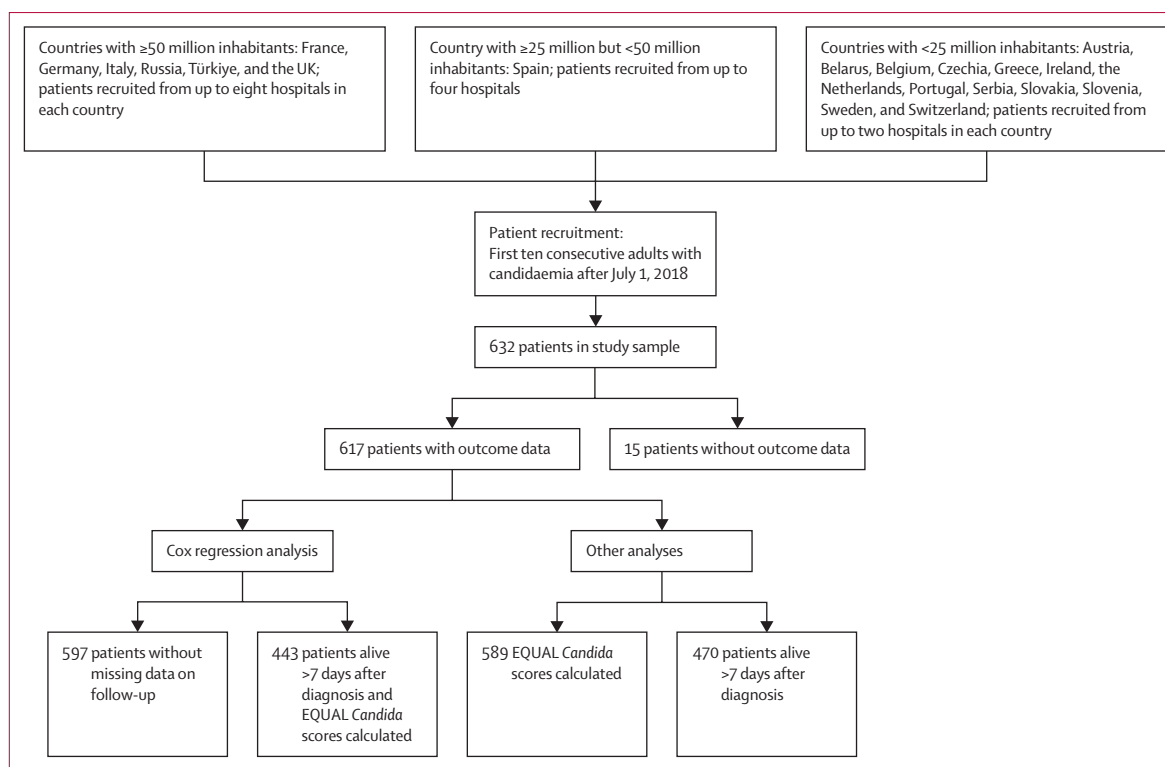


Figure 2: Study flowchart

EQUAL *Candida*=European Confederation of Medical Mycology Quality of Clinical Candidaemia Management.

model, and *C. auris* and other emerging *Candida* spp in the second model. Informed by the Akaike information criterion values (table 1), we decided to use the baseline parameters of the first model for further adjustments of the remaining risk models.

Overall mortality was lower in patients receiving initial echinocandin treatment (148/353 [42%]) than in those not receiving such therapy (138/264 [52%];  $p=0.011$ ), also when adjusted for baseline risk factors (adjusted HR 0.56 [95% CI 0.44–0.72];  $p<0.0001$ ).

Although consultation with an infectious diseases physician or microbiologist was associated with better survival in the overall cohort (adjusted HR 0.58 [95% CI 0.44–0.70;  $p=0.0001$ ]), this effect lessened once patients who had a fatal outcome within 2 days of diagnosis of candidaemia ( $n=59$ ) were excluded (0.71 [0.51–0.99];  $p=0.042$ ). No differences were found when patients who had a fatal outcome within 3 days were excluded (0.72 [0.51–1.03];  $p=0.071$ ), driven in part by the fact that the majority of these patients (421/509 [83%]) received consultation.

The EQUAL *Candida* score was available for 589 patients with candidaemia. Ratio scores correlated with duration of hospital stay (Pearson's  $r=0.44$ ;  $p<0.0001$ ). After excluding patients hospitalised for 7 days or less ( $n=119$ ), no correlation was found between duration of hospital stay and the ratio scores (Pearson's  $r=0.05$ ;  $p=0.26$ ), indicating that 7 days was enough time

for completing most guideline recommendations. Even after the exclusion of patients hospitalised for 7 days or less ( $n=119$ ; median ratio score 0.42 [IQR 0.27–0.59] in patients hospitalised for 7 days or less vs 0.77 [0.63–0.86] in those hospitalised for more than 7 days;  $p<0.0001$ ), ratio scores were higher in patients who survived (median ratio score 0.76 [IQR 0.64–0.91]) than in those who died (0.68 [0.55–0.82];  $p<0.0001$ ; appendix p 16).

EQUAL *Candida* scores, score variables, and demographic data of survivors and non-survivors who survived for more than 7 days after candidaemia diagnosis are shown in the appendix (p 16). ROC curve analysis showed an AUC of 0.718 for the proportion of the maximum EQUAL *Candida* score for predicting overall mortality, with an optimal cutoff of 78.1% of the maximum score (which translates to  $>14$  in patients without a CVC and  $>16$  in those with a CVC). Adjusted HR per point increase in EQUAL *Candida* scores for patients with a CVC and those without are displayed in figure 3.

Results of the multivariable Cox regression model for risk of mortality with percent decrease in EQUAL *Candida* score in patients who survived for more than 7 days after diagnosis are displayed in table 2. After adjustment for baseline variables of the first model, a decrease in one score point translated to an adjusted HR of 1.08 (95% CI 1.04–1.11;  $p<0.0001$ ) in patients with a CVC and 1.09 (1.05–1.13;  $p<0.0001$ ) in those without a

Gothenburg, Gothenburg, Sweden (H Hammarström MD); Laboratory of Clinical Microbiology and Molecular Biology, Centro Hospitalar de Lisboa Ocidental, Lisboa, Portugal (C Toscano MD); Institute of Hygiene and Medical Microbiology, European Confederation of Medical Mycology Excellence Center for Medical Mycology, Innsbruck Medical University, Innsbruck, Austria (Prof C Lass-Flörl MD); Department of Medical Microbiology, Aberdeen Royal Infirmary, Foresterhill, Aberdeen, UK (D E A Lockhart PhD); Institute of Medical Sciences, School of Medicine Medical Sciences and Nutrition, University of Aberdeen, Aberdeen, UK (D E A Lockhart); Centre Hospitalier de Versailles, Hématologie, Le Chesnay, France (T Longval MD); Belfast Health and Social Care Trust, Belfast, UK (L Loughlin MD); Institute of Microbiology and Immunology, Faculty of Medicine, University of Ljubljana, Ljubljana, Slovenia (T Matos MD); Newcastle upon Tyne Hospitals NHS Foundation Trust, Newcastle upon Tyne, UK (M Narayanan FRCPath); Hospital Nuestra Señora de Sonsoles, Ávila, Spain (S Martín-Pérez MD); Department of Clinical Microbiology, University Hospitals of Leicester NHS Trust, Leicester, UK (B Rogers MBChB); Unit of Infectious Diseases and Microbiology, Institute of Biomedicine of Seville, University Hospital Virgen del Rocío, Seville, Spain (M Ruiz PhD); Centro de Investigación Biomédica en Red de Enfermedades Infecciosas, Madrid, Spain (M Ruiz); Infectious Diseases Department, Hippokraton General Hospital, Medical School, Aristotle University of Thessaloniki, Thessaloniki, Greece (Prof E Roilides MD); First Department of Medicine, Laikon General Hospital, Medical School, National and Kapodistrian University of Athens, Athens, Greece (Prof M Samarkos MD); Institute of Medical Microbiology, University Hospital Essen, University of Duisburg-Essen,

Essen, Germany (U Scharmann MD, Prof J Steinmann MD); Department of Infectious Diseases and Clinical Microbiology, School of Medicine, Marmara University, Istanbul, Türkiye (Prof U Sili MD); Department of Infectious Diseases and Clinical Microbiology, Ege University Medical School, Izmir, Türkiye (Prof O Resat Sipahi MD); Department of Microbiology, St Anne's Faculty Hospital and Faculty of Medicine, Masaryk University, Brno, Czech Republic (A Sivakova MD); Institute for Clinical Hygiene, Medical Microbiology and Infectiology, Paracelsus Medical University, Klinikum Nürnberg, Nuremberg, Germany (Prof J Steinmann); Section of Infectious Diseases, Department of Medicine II, Justus-Liebig-University Giessen, Giessen, Germany (J Trauth MD); Department of Infectious Diseases and Clinical Microbiology, Faculty of Medicine, Akdeniz University, Antalya, Türkiye (Prof O Turhan MD); Division of Nephrology and Infectious Diseases, AZ Sint-Jan Brugge-Oostende AV, Brugge, Belgium (J Van Praet MD); Microbiology Division, Public Health Wales, Cardiff, UK (Prof P L White PhD); Centre for Trials Research and Division of Infection and Immunity, Cardiff University, Cardiff, UK (Prof P L White); Division of Clinical Microbiology, Department of Laboratory Medicine, Medical University of Vienna, Vienna, Austria (Prof B Willinger MD); Department of Public Health, Microbiology, and Virology, Università degli Studi di Milano, Milan, Italy (A M Tortorano PhD); Unit of Mycology, Statens Serum Institut, Copenhagen, Denmark (Prof M C Arendrup MD); Department of Clinical Microbiology, Rigshospitalet, Copenhagen, Denmark (Prof M C Arendrup); Department of Clinical Medicine, University of Copenhagen, Copenhagen, Denmark (Prof M C Arendrup); German Centre for Infection Research (DZIF), Partner Site Bonn-Cologne, Cologne, Germany (P Koehler, Prof O A Cornely)

	Hazard ratio (95% CI)	p value
<b>Univariable models</b>		
Sex		
Female (n=248)	1 (ref)	..
Male (n=349)	1.19 (0.93-1.52)	0.16
Age (per 20 years; n=597)	1.37 (1.18-1.60)	<0.0001
BMI		
<30 kg/m <sup>2</sup> (n=496)	1 (ref)	..
≥30 kg/m <sup>2</sup> (n=101)	1.01 (0.74-1.39)	0.95
Solid organ transplant		
No (n=583)	1 (ref)	..
Yes (n=14)	0.61 (0.25-1.49)	0.28
Haematological or oncological malignancy		
No (n=358)	1 (ref)	..
Yes (n=239)	1.13 (0.89-1.44)	0.32
Neutropenia (<500 cells per μL)		
No (n=516)	1 (ref)	..
Yes (n=61)	1.06 (0.75-1.50)	0.75
Major surgery including abdominal surgery		
No (n=437)	1 (ref)	..
Yes (n=160)	0.95 (0.72-1.25)	0.70
Type 1 or 2 diabetes		
No (n=461)	1 (ref)	..
Yes (n=136)	0.99 (0.75-1.31)	0.93
ICU admission		
No (n=371)	1 (ref)	..
Yes (n=226)	1.71 (1.34-2.17)	<0.0001
Catheter-related bloodstream infection		
No (n=470)	1 (ref)	..
Yes (n=127)	0.89 (0.66-1.19)	0.43
Prosthetic heart valve		
No (n=519)	1 (ref)	..
Yes (n=78)	1.00 (0.71-1.42)	0.98
Mechanical ventilation		
No (n=366)	1 (ref)	..
Yes (n=150)	1.32 (1.02-1.71)	0.033
Extracorporeal membrane oxygenation		
No (n=582)	1 (ref)	..
Yes (n=15)	1.32 (0.65-2.67)	0.44
Total parenteral nutrition		
No (n=465)	1 (ref)	..
Yes (n=132)	0.83 (0.62-1.11)	0.21
Charlson comorbidity index (per score increase; n=597)		
	1.09 (1.05-1.13)	<0.0001
Charlson comorbidity index (excluding age; per score increase; n=597)		
	1.07 (1.03-1.11)	0.0019
<i>Candida albicans</i>		
No (n=314)	1 (ref)	..
Yes (n=274)	0.92 (0.72-1.16)	0.48
<i>Candida glabrata</i>		
No (n=461)	1 (ref)	..
Yes (n=127)	0.88 (0.65-1.18)	0.39

(Table 1 continues in next column)

	Hazard ratio (95% CI)	p value
(Continued from previous column)		
<i>Candida parapsilosis</i>		
No (n=508)	1 (ref)	..
Yes (n=80)	0.98 (0.70-1.38)	0.92
<i>Candida tropicalis</i>		
No (n=544)	1 (ref)	..
Yes (n=44)	1.78 (1.16-2.57)	0.0071
<i>Candida krusei</i>		
No (n=576)	1 (ref)	..
Yes (n=12)	0.84 (0.31-2.25)	0.73
<i>Candida auris</i>		
No (n=573)	1 (ref)	..
Yes (n=15)	1.39 (0.69-2.81)	0.36
<i>Candida dubliniensis</i>		
No (n=579)	1 (ref)	..
Yes (n=9)	0.69 (0.22-2.15)	0.52
<i>Candida guilliermondii</i>		
No (n=582)	1 (ref)	..
Yes (n=6)	3.64 (1.62-8.18)	0.0018
<i>Candida lusitanae</i>		
No (n=583)	1 (ref)	..
Yes (n=5)	1.23 (0.39-3.84)	0.72
<i>Candida kefyr</i>		
No (n=583)	1 (ref)	..
Yes (n=5)	3.27 (1.22-8.80)	0.019
Other <i>Candida</i> spp*		
No (n=579)	1 (ref)	..
Yes (n=9)	0.75 (0.24-2.33)	0.62
<i>Candida auris</i> and other emerging <i>Candida</i> spp†		
No (n=542)	1 (ref)	..
Yes (n=46)	1.54 (1.03-2.30)	0.034
<i>Candida auris</i> and rare <i>Candida</i> spp‡		
No (n=539)	1 (ref)	..
Yes (n=49)	1.39 (0.93-2.09)	0.11
Mixed fungal infections		
No (n=551)	1 (ref)	..
Yes (n=37)	2.45 (0.57-10.5)	0.23
Initial echinocandin treatment		
No (n=249)	1 (ref)	..
Yes (n=348)	0.55 (0.44-0.70)	<0.0001
Infection consultation with an infectious diseases or microbiology expert		
No (n=113)	1 (ref)	..
Yes (n=475)	0.56 (0.43-0.74)	<0.0001

(Table 1 continues in next column)

CVC. Ratio scores below the calculated Youden cutoff of 78.1% of the maximum score were associated with an adjusted HR of 3.53 (2.01-5.98; p<0.0001).

Overall mortality rates for variables of the EQUAL *Candida* score that were not performed or completed, followed by results of the multivariable Cox regression model evaluating each of the not performed score

	Hazard ratio (95% CI)	p value
(Continued from previous column)		
<b>First multivariable model (AIC=3172)</b>		
Age (per 20 years)	1.34 (1.15–1.57)	0.0002
ICU admission		
No	1 (ref)	..
Yes	1.83 (1.44–2.33)	<0.0001
Charlson comorbidity index (excluding age; per score increase)	1.07 (1.02–1.12)	0.0035
<i>Candida tropicalis</i>		
No	1 (ref)	..
Yes	1.71 (1.15–2.55)	0.0085
<b>Second multivariable model (AIC=3175)</b>		
Age (per 20 years)	1.39 (1.18–1.63)	<0.0001
ICU admission		
No	1 (ref)	..
Yes	1.77 (1.39–2.25)	<0.0001
<i>Candida auris</i> and other emerging <i>Candida</i> spp†		
No	1 (ref)	..
Yes	1.50 (0.99–2.26)	0.056
Charlson comorbidity index (excluding age; per score increase)	1.06 (1.02–1.11)	0.0056

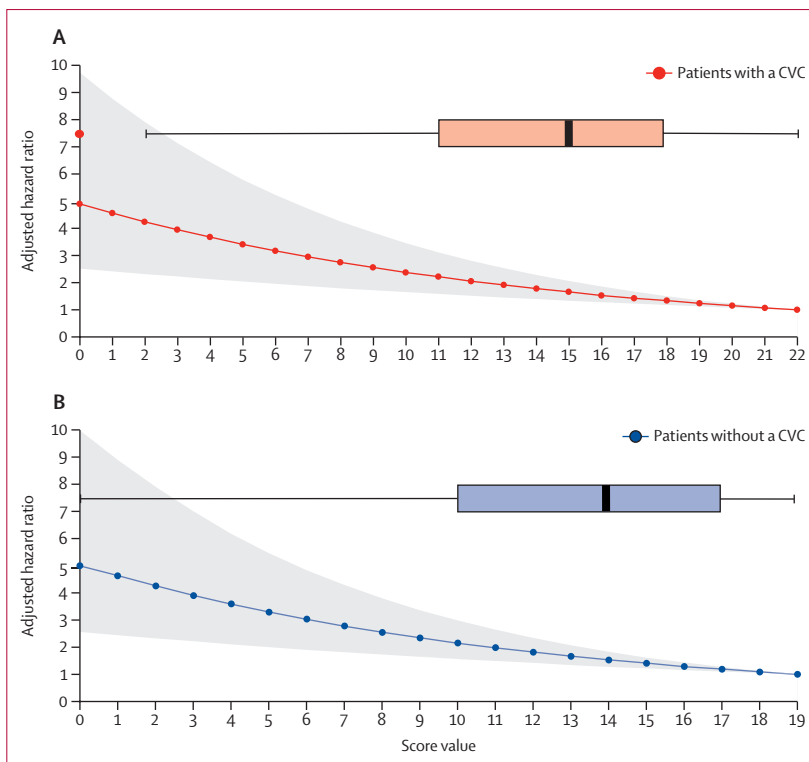
AIC=Akaike information criterion. ICU=intensive care unit. \*Other *Candida* spp include: *C. norvegensis* (n=1), *C. digboensis* (n=1), *C. rugosa* (n=3), *C. pelliculosa* (n=2), *C. inconspicua* (n=2; one patient coinfected with *C. norvegensis*), and *C. famata* (n=1). †Other emerging *Candida* spp include: *C. kefyr* (n=5), *C. guilliermondii* (n=6), *C. lusitanae* (n=5), *C. dubliniensis* (n=5), *C. famata* (n=1), *C. inconspicua* (n=2; one patient coinfected with *C. norvegensis*), *C. rugosa* (n=3), and *C. norvegensis* (n=1). ‡Rare *Candida* spp include species with ten or fewer isolates: *C. kefyr* (n=5), *C. guilliermondii* (n=6), *C. lusitanae* (n=5), *C. dubliniensis* (n=5), *C. norvegensis* (n=1), *C. digboensis* (n=1), *C. rugosa* (n=3), *C. pelliculosa* (n=2), *C. inconspicua* (n=2; one patient coinfected with *C. norvegensis*), and *C. famata* (n=1).

**Table 1: Univariable and multivariable Cox regression models for predictors of mortality in patients with candidaemia (n up to 597)**

variables (adjusted for significant baseline risk factors), are outlined in table 3. Mortality in patients for whom guideline-recommended diagnostic or therapeutic measures were not performed was higher (51–71%; table 3) than in the overall cohort (286/617 [46%]). In the multivariable Cox model comparing the effect of guideline-recommended diagnostic or therapeutic measures for patients who survived for more than 7 days and adjusted for the baseline predictors, the following not-performed or not-completed measures were predictors of mortality: ophthalmoscopy (adjusted HR 2.19 [95% CI 1.55–3.11]; p<0.0001), echocardiography (1.77 [1.27–2.46]; p=0.0006), treatment for 14 days or more after the first negative blood culture (3.64 [2.62–5.06]; p<0.0001), and step-down therapy to fluconazole (1.71 [1.17–2.50]; p=0.0058).

### Discussion

We did a multicentre observational study of candidaemia, involving 64 hospitals from 20 countries across Europe. Our main finding is that overall 90-day mortality due to



**Figure 3: Mortality risk per point increase in EQUAL *Candida* scores for patients with a CVC and those without one, and boxplots of the distribution of score values in the two groups**

Hazard ratios and associated 95% CI were adjusted for age, intensive care unit admission, Charlson comorbidity index (excluding age), and *Candida tropicalis*. Boxplots show the median (midline) and IQR (range of the box); whiskers extend 1.5 times the IQR and any counts beyond these ranges (ie, outliers) are indicated by a circle. (A) Patients with a CVC. (B) Patients without a CVC. CVC=central venous catheter. EQUAL *Candida*=European Confederation of Medical Mycology Quality of Clinical Candidaemia Management.

candidaemia remains high (265/617 [43%]). However, adherence to clinical guideline recommendations, as reflected by higher EQUAL *Candida* scores, was a strong independent predictor of survival. Other findings included that candidaemia caused by rare *Candida* spp might be a relevant independent baseline predictor of mortality, in addition to known predictors such as increasing age and ICU admission. In terms of treatment, initial echinocandin treatment was associated with increased overall survival, but also with longer duration of hospital stay, compared with treatment with other antifungals.

The overall mortality of 46% found in this study (90-day mortality of 43%), of which 37% was directly attributable to candidaemia according to investigators, suggests that candidaemia is still a major threat to patients and a medical emergency. The rate is as high or even slightly higher than rates reported earlier, such as 43% overall mortality from a study in Germany, with 26% mortality attributable to candidaemia;<sup>24</sup> 37.9% mortality between 1997 and 1999, from a previous ECMM European cohort study including neonates and children;<sup>17</sup> and 38.8% mortality from another ECMM European cohort study of patients admitted to surgical ICU between 2006 and 2008.<sup>18</sup> Additionally, a

Correspondence to: Prof Martin Hoenigl, Division of Infectious Diseases, Department of Internal Medicine, Medical University of Graz, Graz 8036, Austria  
 hoeniglmartin@gmail.com  
 For the online platform see www.clinicalsurveys.net  
 See Online for appendix

	Adjusted hazard ratio (95% CI)	p value
EQUAL <i>Candida</i> score risk per 1% decrease of the ratio score	1.02 (1.01–1.02)	<0.0001
EQUAL <i>Candida</i> score risk per 10% decrease of the ratio score	1.18 (1.10–1.26)	<0.0001
Risk per point decrease in EQUAL <i>Candida</i> score for patients with a central venous catheter*	1.08 (1.04–1.11)	<0.0001
Risk per point decrease in EQUAL <i>Candida</i> score for patients without a central venous catheter*	1.09 (1.05–1.13)	<0.0001
Risk reduction comparing maximum and minimum EQUAL <i>Candida</i> score	0.20 (0.10–0.39)	<0.0001
Optimal EQUAL <i>Candida</i> score cutoff for predicting risk		
EQUAL <i>Candida</i> score >78.1% of the maximum score†	1 (ref)	..
EQUAL <i>Candida</i> score ≤78.1% of the maximum score†	3.53 (2.01–5.98)	<0.0001

The ratio score is the actual EQUAL *Candida* score divided by the maximum achievable EQUAL *Candida* score. EQUAL *Candida*=European Confederation of Medical Mycology Quality of Clinical Candidaemia Management. \*The maximum EQUAL *Candida* score is 22 points (ie, 4.5% per point) for patients with a central venous catheter, and 19 points (ie, 5.3% per point) for patients without a central venous catheter. †Multivariable hazard ratio for calculated threshold with maximum sensitivity and specificity for prediction of death.

**Table 2: Multivariable Cox regression models (adjusted for age, intensive care unit admission, Charlson comorbidity index [excluding age], and *Candida tropicalis*) for risk of mortality with percent decrease in EQUAL *Candida* score in patients with candidaemia who survived for more than 7 days (n=443)**

90-day crude mortality of 42.4% in patients with *Candida* bloodstream infections was reported in the USA, which was more than two times as high as the 17.1% mortality observed among matched controls.<sup>25</sup> After propensity score-matching, the attributable risk difference for 90-day mortality was 28.4% (HR 2.12 [95% CI 1.98–2.25], p<0.001).<sup>25</sup>

Our study identified adherence to international guideline recommendations as a major protective factor, even after adjustment for the baseline risk factors (age, ICU admission, Charlson comorbidity index, and *C tropicalis*). With every point decrease of the EQUAL *Candida* score, reflecting a decrease in adherence to guideline recommendations, risk of death increased by 9% for patients with a CVC and 8% for patients without a CVC. Additionally, patients for whom guideline-recommended diagnostic or therapeutic measures were not performed had higher mortality rates than the overall cohort, emphasising the importance of every single guideline recommendation in the successful management of candidaemia.

Many known risk factors for *Candida* infections in the ICU (eg, previous surgery, total parenteral nutrition, CVC, broad spectrum antibiotics, diabetes, neutropenia, or solid organ transplantation<sup>5–7</sup>) were present in relevant proportions in our study population. Increasing age, severe hepatic failure, organ failure at the onset of invasive candidiasis, and septic shock were previously associated with increased 30-day mortality in patients with candidaemia.<sup>3</sup> In this study, increasing age, point increases in the Charlson comorbidity index score, ICU admission, and *C tropicalis* as causative pathogen were independent baseline predictors of candidaemia mortality. Additionally, candidaemia caused by rare *C tropicalis*, and candidaemia caused by emerging or rare

	Absolute mortality rates	Adjusted hazard ratio (95% CI)	p value
<b>Diagnostic measures</b>			
Initial blood cultures of 40 mL			
Performed	253/557 (45%)	1 (ref)	..
Not performed	32/55 (58%)	1.26 (0.69–2.30)	0.46
Species identification			
Performed	260/570 (46%)	1 (ref)	..
Not performed	25/43 (58%)	1.46 (0.76–2.82)	0.30
Susceptibility testing			
Performed	230/520 (44%)	1 (ref)	..
Not performed	53/89 (60%)	1.40 (0.86–2.29)	0.26
Ophthalmoscopy			
Performed	56/219 (26%)	1 (ref)	..
Not performed	224/382 (59%)	2.19 (1.55–3.11)	<0.0001
Echocardiography			
Performed	90/267 (34%)	1 (ref)	..
Not performed	189/334 (57%)	1.77 (1.27–2.46)	0.0006
Follow-up blood cultures until negative			
Performed	126/360 (35%)	1 (ref)	..
Not performed	148/230 (64%)	1.28 (0.91–1.80)	0.16
<b>Treatment measures</b>			
Start of echinocandin treatment			
Performed	148/353 (42%)	1 (ref)	..
Not performed	138/264 (52%)	1.23 (0.87–1.72)	0.26
Step-down therapy to fluconazole			
Performed	50/186 (27%)	1 (ref)	..
Not performed	236/431 (55%)	1.71 (1.17–2.50)	0.0058
Treatment for ≥14 days after the first negative blood culture			
Performed	85/325 (26%)	1 (ref)	..
Not performed	196/278 (71%)	3.64 (2.62–5.06)	<0.0001
Central venous catheter removal ≤24 h*			
Performed	86/216 (40%)	1 (ref)	..
Not performed	194/384 (51%)	1.41 (0.96–2.05)	0.78
Central venous catheter removal >24 h but <72 h*			
Performed	39/82 (48%)	1 (ref)	..
Not performed†	155/302 (51%)	1.21 (0.77–1.90)	0.42

EQUAL *Candida*=European Confederation of Medical Mycology Quality of Clinical Candidaemia Management. \*Patients with a central venous catheter only. †Not performed indicates that catheter was not removed within 72 h.

**Table 3: Absolute mortality rates for patients for whom EQUAL *Candida* score variables were either performed or not performed (n up to 617), and corresponding multivariable Cox regression models (adjusted for age, intensive care unit admission, Charlson comorbidity index [excluding age], and *Candida tropicalis*) for prediction of mortality in patients with candidaemia who survived for more than 7 days (n=443)**

*Candida* spp, particularly *C kefyr*, *C guilliermondii*, and *C auris*, were also significant baseline predictors in the univariable models. An increase of species other than *C albicans*<sup>26</sup> and the emergence of new resistant species, including but not limited to *C auris* and fluconazole-resistant *C parapsilosis*,<sup>27,28</sup> could manifest as major risk factors applicable to larger proportions of patients with candidaemia in the future.<sup>9</sup> Although obtaining an

infectious disease consultation has previously been shown to be protective against mortality with an HR of 0.81 (95% CI 0.73–0.91;  $p < 0.0001$ ) after propensity score weighting,<sup>10</sup> our study found that consultation by an infectious diseases or microbiology expert was protective particularly against mortality within 1 day or 2 days after diagnosis, even after adjusting for baseline risk factors (adjusted HR 0.58 [95% CI 0.44–0.70];  $p < 0.0001$ ). Although this result suggests the value of early consultation, it might have been confounded by the fact that some patients had died before they could receive consultation. When patients survived longer than 3 days after diagnosis, doing a consultation with an infectious diseases or microbiology expert did not translate to survival benefit (adjusted HR 0.72 [95% CI 0.51–1.03];  $p = 0.071$ ).

Finally, our study showed that initial echinocandin treatment was associated with increased overall survival, but also increased duration of hospital stay: hospital stay was extended only to complete parenteral antifungal treatment in patients for whom step-down therapy to fluconazole<sup>29</sup> was not an option (100/621 [16%]). Importantly, in the near future, earlier hospital discharge for these patients might be favoured by an enriched antifungal pipeline,<sup>30</sup> which includes rezafungin, an echinocandin with improved penetration into the peritoneal fluid and extended half-life allowing a once-per-week administration, and ibrexafungerp, a novel antifungal class with an echinocandin-like mechanism of action and excellent oral bioavailability.<sup>31</sup>

Despite its large size (64 institutions in 20 European countries), this multicentre multinational study comes with some limitations. Not all requested data were available for all patients, and the presented data reflect a real-life scenario with no predefined fungal diagnostic strategies or treatment protocols, potentially affecting the ability to make an early diagnosis and thereby clinical outcomes. Additionally, EQUAL *Candida* scores might be higher in long-term survivors than in patients with an early fatal outcome because the provision of some of the diagnostic and treatment recommendations takes time and might not be available for patients with an early fatal outcome. We therefore adjusted our analyses to exclude all patients with a fatal outcome within the first 7 days after diagnosis, but we cannot rule out that, even after this adjustment, survival duration might remain a confounder, particularly for length of therapy. However, when the analysis was limited to include only patients who survived at least 14 days after diagnosis, survival was longer for patients receiving treatment for 14 days or more (239/306 [78%]) than for patients who were treated for less than 14 days (67/102 [66%]), indicating that increased treatment duration might be associated with longer-term survival. Importantly, availability of fungal diagnostics, provision of consultations by infectious diseases and microbiology experts, and access to antifungal drugs vary globally, with more limited access

in low-income and middle-income countries than in high-income countries, limiting generalisability of our results to other settings.<sup>32</sup> Although the geographical distribution of our sample is reflective of Europe, including its laboratory capacities,<sup>33</sup> the settings with better access to diagnostics and antifungals were probably over-represented.

In conclusion, we found that across Europe overall 90-day mortality of candidaemia remains high at 43%. Importantly, our study indicates that adherence to clinical guideline recommendations could increase survival. We also observed that current first-line candidaemia treatments with echinocandins are associated not only with increased overall survival, but also with longer duration of hospital stay, including being a direct cause of extended hospital stay, due to the fact that no oral alternatives to azoles are available. This limitation could be overcome by new antifungals with oral bioavailability or longer half-lives, which could allow for earlier discharge and outpatient therapy, reducing costs and risks associated with hospital stay (eg, nosocomial infection).

#### ECMM *Candida* III Study Group

Mario Tumbarello, Alida Fe Talento, Alba C Ruiz, Zdenek Racil, Igor Stoma, María Calbacho, Eric Van Wijngaerden, Júlia Henriques, Harriett Jordan, Valentina Ferroni, Ozlem Koyuncu Ozyurt, Christopher Milacek, Robert Krause, Christoph Zurl, Matthijs Backx, Ang Li, Raphael Seufert, Rok Tomazin, Yael Blankenheim, Julio Dávila-Valls, Paloma García-Clemente, Tomas Freiberger, Jochem Buil, Jacques F Meis, Deniz Akyol, Hélène Guegan, Clare Logan.

#### Contributors

MH, PK, OAC, JS-G, MCA, J-PG, SA-A, and TB made substantial contributions to the study concept and design. MH, OAC, and JS-G accessed and verified all data. MH and ME made substantial contributions to the statistical analysis and interpretation of data. MH, ME, JS-G, PK, and OAC drafted the manuscript. All authors made substantial contributions to the acquisition of data for the work, and critically reviewed the manuscript and gave the final approval for publication. MH, PK, OAC, and JS-G had full access to all the data in the study and had final responsibility for the decision to submit for publication.

#### Declaration of interests

MH reports grants and research funding from Astellas Pharma, Gilead Sciences, MSD, Pfizer, Euroimmun, F2G, Pulmocide, IMMY, and Mundipharma, outside of the submitted work, as well as Scynesis. JS-G has received lecture honoraria from Gilead Sciences and Pfizer, outside of the submitted work. J-PG has received lecture honoraria from Gilead Sciences, Mundipharma, and Pfizer, outside of the submitted work. TB reports receipt of speaker fees, advisory board fees, and research fellowship funding from Gilead Sciences; research grants from Pfizer and MSD; and advisory board fees from Mundipharma, all outside of the submitted work. SA-A reports research grants from Cidara Therapeutics, lecture honoraria from Gilead Sciences, and travel grants from Astellas Pharma, all outside of the submitted work. AA-I has received honoraria for educational talks on behalf of Gilead Sciences and Pfizer, outside of the submitted work. NKI was a Speaker for Astellas Pharma, Gilead Sciences, Merck/MSD, and Pfizer; and an Adviser for Gilead Sciences, Merck/MSD, and Pfizer, all outside of the submitted work. KL received consultancy fees from MRM Health, MSD, and Gilead Sciences; speaker fees from FUJIFILM Wako, Pfizer, and Gilead Sciences; and a service fee from Thermo Fisher Scientific and TECOmedical, all outside of the submitted work. NKH is a member of the Gilead Sciences, MSD, and Pfizer advisory boards for invasive fungal infections, and Chair of Pulmocide's Data and Safety

Monitoring Board; and reports grants from the Swiss National Science Foundation (grant number 32003B\_204944) and the National Center of Competence in Research AntiResist Grant 51NF40\_180541, all outside of the submitted work. MB reports personal fees from Bayer, bioMérieux, Cidara Therapeutics, Cipla, Gilead Sciences, Menarini, MSD, Pfizer, and Shionogi, and research grants from Pfizer and MSD, all outside the submitted work. MA has received research grants from Pfizer; and honoraria from Pfizer, Gilead Sciences, and Sanofi for contributing educational activities that were paid to the university funds, all outside of the submitted work. VAA reports research funding from Pfizer outside of the submitted work. FD declares personal fees from Gilead Sciences and Pfizer, outside of the submitted work. BD reports receipt of speaker fees and advisory board fees from Gilead Sciences; and advisory board fees from Pfizer, all outside of the submitted work. GD has received lecture honoraria from Gilead Sciences and Pfizer, outside of the submitted work. GD was also invited to symposia and congresses by Gilead and Pfizer. LD reports lecture honoraria from Pfizer, MSD, and Teva Pharmaceuticals, outside of the submitted work. CG-V reports grant support from Gilead Sciences and MSD; and personal fees from Gilead Sciences, MSD, Novartis, Pfizer, Janssen, and Lilly, all outside of the submitted work. DRG reports investigator-initiated grants from Pfizer, Shionogi, and Gilead Italia; and personal fees from Pfizer and Tillotts Pharma, all outside of the submitted work. ALG reports personal fees from Janssen, ViiV Healthcare, MSD, Bristol Myers Squibb, AbbVie, Gilead Sciences, Novartis, Pfizer, Astellas Pharma, AstraZeneca, and Angelini Pharma, outside of the submitted work. FL reports receipt of speaker fees from Gilead Sciences, Pfizer, and F2G; and advisory board fees from F2G, all outside of the submitted work. MM has received speaker fees from Janssen, Gilead Sciences, Mundipharma, MSD, and Pfizer, outside of the submitted work. JP has received research funding from MSD and Pfizer; and lecture honoraria from Gilead Sciences, Pfizer, Associates of Cape Cod, and Swedish Orphan Biovitrum, all outside of the submitted work. ER reports grants to his institutions from Astellas Pharma, MSD, Scynexis, Shionogi, GSK, Pfizer, Gilead Sciences, and Allergan; and has served as Consultant to Amplyx, Astellas Pharma, Gilead Sciences, MSD, Pfizer, Scynexis, GSK, and Shionogi, all outside of the submitted work. ORS has received speaker honoraria from Astellas Pharma, Pfizer, and Koçak Farma, outside of the submitted work. JS has received lecture honoraria from Gilead Sciences and Pfizer, outside of the submitted work. PLW has done diagnostic evaluations for, and received meeting sponsorship from, Associates of Cape Cod, Bruker, Dynamiker Biotechnology, and Launch Diagnostics; and has received speaker fees, expert advice fees, and meeting sponsorship from Gilead Sciences; speaker and expert advice fees from Pfizer; and expert advice fees from F2G, all outside of the submitted work. BW reports personal fees from MSD, Pfizer, Gilead Sciences, Shionogi, Euroimmun, IMMY, and Associates of Cape Cod; and grants to her institution from Pfizer and Shionogi, all outside of the submitted work. AMT has received lecture honoraria from Gilead Sciences, outside of the submitted work. MCA has received research grants and contract work (paid to her institution) from Amplyx, Basilea, Cidara Therapeutics, F2G, Gilead Sciences, NovaBiotics, and Scynexis; and speaker honoraria (personal fee) from Astellas Pharma, Chiesi Farmaceutici, Gilead Sciences, MSD, and SEGES, all outside of the submitted work. PK reports research funding from the German Federal Ministry of Education and Research (BMBF) B-FAST (Bundesweites Forschungsnetz Angewandte Surveillance und Testung) and NAPKON (Nationales Pandemie Kohorten Netz, German National Pandemic Cohort Network) of the Network University Medicine and the State of North Rhine–Westphalia; consulting fees from Ambu, Gilead Sciences, Mundipharma, NOXXON Pharma, and Pfizer; honoraria for lectures from Akademie für Infektionsmedizin, Ambu, Astellas Pharma, Bio-Rad Laboratories, European Confederation of Medical Mycology, Gilead Sciences, Gesundheits und Pflegezentrum Academy Ruesselsheim, HELIOS Kliniken, medupdate, MedMedia, MSD, Pfizer, Scilink Comunicación Científica SC, and University Hospital LMU Munich; fees for participation on advisory boards from Ambu, Gilead Sciences, Mundipharma, and Pfizer; a pending patent currently reviewed at the German Patent and Trade Mark Office; and other non-financial interests from Elsevier, Wiley, and Taylor & Francis,

all outside of the submitted work. OAC reports grants and personal fees from Actelion, Amplyx, Astellas Pharma, Basilea, Cidara Therapeutics, Da Volterra, F2G, Gilead Sciences, Medpace, Merck/MSD, and Pfizer; personal fees from Allegra Therapeutics, Al-Jazeera Pharmaceuticals, Biosys, Entasis Therapeutics, Grupo Biotoscana, IQVIA, Matinas BioPharma, Menarini, Mylan, Nabriva Therapeutics, NOXXON Pharma, Octapharma, Paratek Pharmaceuticals, PSI, Roche Diagnostics, Shionogi, Biocon, CoRe Consulting, Molecular Partners, MSGERC, Seres Therapeutics, and Wiley (Blackwell); grants from Janssen, Medicines Company, Melinta Therapeutics, German Research Foundation (DFG), German Federal Ministry of Education and Research, and Immunic, all outside of the submitted work; and a research grant from Scynexis. All other authors declare no competing interests.

#### Data sharing

Case-level deidentified participant data and data dictionary will be available from the corresponding author (hoeniglmartin@gmail.com) on request from the time of publication, after approval of study proposals by the ECMM *Candida* III steering committee, confirming that planned analyses will not overlap with other planned subanalyses of the dataset.

#### Acknowledgments

The study was partly funded by an Investigator Initiated Research Grant from Scynexis (principal investigators MH and OAC), and the remainder was not funded.

#### References

- Egger M, Hoenigl M, Thompson GR 3rd, Carvalho A, Jenks JD. Let's talk about sex characteristics—as a risk factor for invasive fungal diseases. *Mycoses* 2022; **65**: 599–612.
- Bongomin F, Gago S, Oladele RO, Denning DW. Global and multi-national prevalence of fungal diseases—estimate precision. *J Fungi (Basel)* 2017; **3**: 57.
- Bassetti M, Giacobbe DR, Vena A, et al. Incidence and outcome of invasive candidiasis in intensive care units (ICUs) in Europe: results of the EUCANDICU project. *Crit Care* 2019; **23**: 219.
- Koehler P, Stecher M, Cornely OA, et al. Morbidity and mortality of candidaemia in Europe: an epidemiologic meta-analysis. *Clin Microbiol Infect* 2019; **25**: 1200–12.
- Muskett H, Shahin J, Eyres G, Harvey S, Rowan K, Harrison D. Risk factors for invasive fungal disease in critically ill adult patients: a systematic review. *Crit Care* 2011; **15**: R287.
- Hoenigl M, Seidel D, Sprute R, et al. COVID-19-associated fungal infections. *Nat Microbiol* 2022; **7**: 1127–40.
- Keighley CL, Pope A, Marriott DJE, et al. Risk factors for candidaemia: a prospective multi-centre case-control study. *Mycoses* 2021; **64**: 257–63.
- Strollo S, Lionakis MS, Adjemian J, Steiner CA, Prevots DR. Epidemiology of hospitalizations associated with invasive candidiasis, United States, 2002–2012. *Emerg Infect Dis* 2016; **23**: 7–13.
- Puig-Asensio M, Padilla B, Garnacho-Montero J, et al. Epidemiology and predictive factors for early and late mortality in *Candida* bloodstream infections: a population-based surveillance in Spain. *Clin Microbiol Infect* 2014; **20**: O245–54.
- Mejia-Chew C, O'Halloran JA, Olsen MA, et al. Effect of infectious disease consultation on mortality and treatment of patients with *Candida* bloodstream infections: a retrospective, cohort study. *Lancet Infect Dis* 2019; **19**: 1336–44.
- Mellinghoff SC, Hoenigl M, Koehler P, et al. EQUAL *Candida* Score: an ECMM score derived from current guidelines to measure QUALity of Clinical Candidaemia Management. *Mycoses* 2018; **61**: 326–30.
- Cornely OA, Bassetti M, Calandra T, et al. ESCMID\* guideline for the diagnosis and management of *Candida* diseases 2012: non-neutropenic adult patients. *Clin Microbiol Infect* 2012; **18** (suppl 7): 19–37.
- Pappas PG, Kauffman CA, Andes DR, et al. Clinical practice guideline for the management of candidiasis: 2016 update by the Infectious Diseases Society of America. *Clin Infect Dis* 2016; **62**: e1–50.
- El Zakhem A, El Eid R, Istambouli R, Tamim H, Kanj SS. The utility of EQUAL *Candida* Score in predicting mortality in patients with candidemia. *J Fungi (Basel)* 2022; **8**: 238.

- 15 Leepattarakit T, Tulyaprawat O, Vongseenin C, et al. EQUAL *Candida* Score, an effective tool for predicting the outcomes of *Candida tropicalis* candidaemia: a retrospective cohort study. *Mycoses* 2022; **65**: 473–80.
- 16 Hoenigl M, Gangneux JP, Segal E, et al. Global guidelines and initiatives from the European Confederation of Medical Mycology to improve patient care and research worldwide: new leadership is about working together. *Mycoses* 2018; **61**: 885–94.
- 17 Tortorano AM, Peman J, Bernhardt H, et al. Epidemiology of candidaemia in Europe: results of 28-month European Confederation of Medical Mycology (ECMM) hospital-based surveillance study. *Eur J Clin Microbiol Infect Dis* 2004; **23**: 317–22.
- 18 Klingspor L, Tortorano AM, Peman J, et al. Invasive *Candida* infections in surgical patients in intensive care units: a prospective, multicentre survey initiated by the European Confederation of Medical Mycology (ECMM) (2006–2008). *Clin Microbiol Infect* 2015; **21**: 87e1–10.
- 19 Cuenca-Estrella M, Verweij PE, Arendrup MC, et al. ESCMID\* guideline for the diagnosis and management of *Candida* diseases 2012: diagnostic procedures. *Clin Microbiol Infect* 2012; **18** (suppl 7): 9–18.
- 20 Salmanton-García J, Busca A, Cornely OA, et al. EPICOVIDEHA: a ready to use platform for epidemiological studies in hematological patients with COVID-19. *Hemasphere* 2021; **5**: e612.
- 21 Seidel D, Durán Graeff LA, Vehreschild MJGT, et al. FungiScope—global emerging fungal infection registry. *Mycoses* 2017; **60**: 508–16.
- 22 Koehler P, Arendrup MC, Arikian-Akdagli S, et al. ECMM *CandiReg-A* ready to use platform for outbreaks and epidemiological studies. *Mycoses* 2019; **62**: 920–27.
- 23 Papon N, Courdavault V, Clastre M, Bennett RJ. Emerging and emerged pathogenic *Candida* species: beyond the *Candida albicans* paradigm. *PLoS Pathog* 2013; **9**: e1003550.
- 24 Cornely FB, Cornely OA, Salmanton-García J, et al. Attributable mortality of candidemia after introduction of echinocandins. *Mycoses* 2020; **63**: 1373–81.
- 25 Mazi PB, Olsen MA, Stwalley D, et al. Attributable mortality of *Candida* bloodstream infections in the modern era: a propensity score analysis. *Clin Infect Dis* 2022; **75**: 1031–36.
- 26 Pappas PG, Lionakis MS, Arendrup MC, Ostrosky-Zeichner L, Kullberg BJ. Invasive candidiasis. *Nat Rev Dis Primers* 2018; **4**: 18026.
- 27 Alcoceba E, Gómez A, Lara-Esbri P, et al. Fluconazole-resistant *Candida parapsilosis* clonally related genotypes: first report proving the presence of endemic isolates harbouring the Y132F *ERG11* gene substitution in Spain. *Clin Microbiol Infect* 2022; **28**: 1113–19.
- 28 Chowdhary A, Tarai B, Singh A, Sharma A. Multidrug-resistant *Candida auris* infections in critically ill coronavirus disease patients, India, April–July 2020. *Emerg Infect Dis* 2020; **26**: 2694–96.
- 29 Moreno-García E, Puerta-Alcalde P, Gariup G, et al. Early stepdown from echinocandin to fluconazole treatment in candidemia: a post hoc analysis of three cohort studies. *Open Forum Infect Dis* 2021; **8**: ofab250.
- 30 Hoenigl M, Sprute R, Arastehfar A, et al. Invasive candidiasis: investigational drugs in the clinical development pipeline and mechanisms of action. *Expert Opin Investig Drugs* 2022; **31**: 795–812.
- 31 Hoenigl M, Sprute R, Egger M, et al. The antifungal pipeline: fosmanogepix, ibrexafungerp, olorofim, opelconazole, and rezafungin. *Drugs* 2021; **81**: 1703–29.
- 32 Driemeyer C, Falci DR, Oladele RO, et al. The current state of clinical mycology in Africa: a European Confederation of Medical Mycology and International Society for Human and Animal Mycology survey. *Lancet Microbe* 2022; **3**: e464–70.
- 33 Salmanton-García J, Hoenigl M, Gagneux J-P, et al. The current state of laboratory mycology in Europe: a European Confederation of Medical Mycology survey. *Lancet Microbe* 2023; **4**: e47–56.