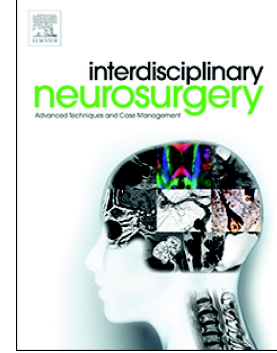


Accepted Manuscript

Posterior fossa hibernoma: A rare case in unexpected location radiologically mimicking arteriovenous malformation

Jülide Hazneci, Pınar Kuru Bektaşođlu, Adnan Somay, Bora Gürer, Erhan Çelikođlu



PII: S2214-7519(18)30240-8

DOI: <https://doi.org/10.1016/j.inat.2019.01.012>

Reference: INAT 424

To appear in: *Interdisciplinary Neurosurgery: Advanced Techniques and Case Management*

Received date: 17 October 2018

Revised date: 26 December 2018

Accepted date: 20 January 2019

Please cite this article as: J. Hazneci, P.K. Bektaşođlu, A. Somay, et al., Posterior fossa hibernoma: A rare case in unexpected location radiologically mimicking arteriovenous malformation, *Interdisciplinary Neurosurgery: Advanced Techniques and Case Management*, <https://doi.org/10.1016/j.inat.2019.01.012>

This is a PDF file of an unedited manuscript that has been accepted for publication. As a service to our customers we are providing this early version of the manuscript. The manuscript will undergo copyediting, typesetting, and review of the resulting proof before it is published in its final form. Please note that during the production process errors may be discovered which could affect the content, and all legal disclaimers that apply to the journal pertain.

Posterior Fossa Hibernoma: A Rare Case in Unexpected Location Radiologically Mimicking Arteriovenous Malformation

Jülide Hazneci, MD¹, Pınar Kuru Bektaşođlu, MD^{1,2}, Adnan Somay, MD³, Bora Güreer, MD, Assoc. Prof.¹, Erhan Çelikođlu, MD, Assoc. Prof.¹

¹ Turkish Ministry of Health, University of Health Sciences, Fatih Sultan Mehmet Education and Research Hospital, Department of Neurosurgery, Istanbul, Turkey

² Marmara University School of Medicine, Department of Physiology, Istanbul, Turkey

³ Turkish Ministry of Health, University of Health Sciences, Fatih Sultan Mehmet Education and Research Hospital, Department of Pathology, Istanbul, Turkey

Corresponding author: Pınar Kuru Bektaşođlu,

Turkish Ministry of Health, University of Health Sciences, Fatih Sultan Mehmet Education and Research Hospital, Department of Neurosurgery, Istanbul, Turkey

Marmara University School of Medicine, Department of Physiology, Istanbul, Turkey

e-mail: pnr.kuru@gmail.com

Phone: +905365981948

Abstract:

Background: Hibernomas are rare tumors histologically originate from the fetal brown adipose tissue. Here, we reported the first hibernoma case located in posterior fossa radiologically mimicking arteriovenous malformation (AVM), presenting with abrupt onset of dizziness, and hiccups. This is the first case of hibernoma location in the posterior fossa.

Case Description: A previously well 32-year-old man, presented with a headache for three days and abrupt onset of dizziness, nausea, vomiting, and hiccups. He had left-sided muscle weakness and hypoesthesia. Non-contrast enhanced computed tomography revealed hemorrhagic lesion at the anterior of the posterior lobe of cerebellum with compression to medulla oblongata with partial obstruction of fourth ventricle. Magnetic resonance imaging (MRI) revealed a mass lesion neighboring at medulla oblongata which had intratumoral large vessels with branching segments. On T1 weighted images the lesion was isointense, on T2 weighted images it was hyperintense. On contrast-enhanced MRI images, heterogeneous contrast pattern was observed which is highly suspicious for AVM. Emergent surgery was performed and total excision was achieved. Histopathological analysis with Hematoxylin and eosin staining revealed yellow colored, minimal hemorrhagic areas and well defined encapsulated solid structure. The specimen showed brown adipose tissue content, with well-defined cytoplasm, large granular or multivacuolated cytoplasmic cells. Besides, small groups of univacuolar adipocytes were also observed. The histopathologic diagnosis was typical hibernoma. The postoperative period was uneventful and the patient was discharged in the fourth postoperative day with full neurological recovery. His neurological examination at the sixth postoperative month was completely normal. Radiological evaluation revealed total excision without any recurrence.

Conclusions: Hibernoma located in the posterior fossa is a unique condition, which may cause acute deterioration of the patient. These lesions may radiologically mimic vascular malformations. Hibernoma must be kept in mind of neurological surgeons in the differential diagnosis of posterior fossa mass lesions.

Introduction

Hibernomas are rare tumors histologically originate from the fetal brown adipose tissue which resembles the special fat deposits of hibernating animals.¹ Hibernomas occur over a wide age range, usually seen in adults with mean age of 38.0 years and account for about 1.6% of lipomatous tumors.¹ In the literature, the largest clinical series of all hibernoma cases were included 170 cases.¹ The most common anatomic locations included the thigh, shoulder, back, neck, chest, arm, and abdominal cavity/retroperitoneum. Hibernomas are usually presented as slow-growing, painless, soft, mobile, palpable masses, or as an incidental imaging finding. They also often show

hypervascularity, sometimes accompanied by locally increased skin temperature.¹ Central nervous system(CNS) localization for hibernoma is a unique condition, where to best of our knowledge only one intracranially located hibernoma case was reported since now.² In the majority of cases, noncontrast computed tomography (CT) demonstrates a fat-containing lesion, although it is important to note that some pathology-proven hibernomas do not show visible fat at CT. The lesion often contains internal septations. On T1 weighted Magnetic Resonance Imaging (MRI) they show up as hypointense to fat, and on T2 images they are usually found to be isointense to subcutaneous fat.³ Typically, hibernomas can be easily separate from adjunct tissues, surgical treatment is the treatment of choice.

Here, we reported the first hibernoma case located in posterior fossa radiologically mimicking arteriovenous malformation (AVM), presenting with abrupt onset of dizziness, and hiccups. This is the first case of hibernoma location in posterior fossa.

Case report

A previously well 32-year-old man, presented with a headache for three days and abrupt onset of dizziness, nausea, vomiting and hiccups. He had left sided muscle weakness and hypoesthesia. Non-contrast enhanced CT revealed hemorrhagic lesion (Hansfield Unit (HU):73.8) at the anterior of the posterior lobe of cerebellum with compression to medulla oblongata with partial obstruction of fourth ventricle (Fig.1). MRI revealed a mass lesion neighbouring at medulla oblongata which had intratumoral large vessels with branching segments. On T1 weighted images (WI) the lesion was isointense, on T2-WI it was hyperintense. On contrast enhanced MRI images heterogeneous contrast pattern was observed which is highly suspicious for AVM. Angiography was planned because of high suspicion of vascular lesion but due to neurological deterioration of the patient emergent surgery was performed.

In concert position, midline skin incision was performed. Following suboccipital craniectomy, the mass was firstly devascularized from its vascular suppliers from anterior inferior cerebellar artery and posterior inferior cerebellar artery, and totally resected. Histopathological analysis with Hematoxylin and eosin (H&E) staining revealed yellow coloured, minimal hemorrhagic areas and well defined encapsulated solid structure (Fig. 2). The specimen showed brown adipose tissue content, with well defined cytoplasm, large granular or multivacuolated cytoplasmic cells. Besides, small groups of univacuolar adipocytes were also observed. Immunohistochemical staining for S100 and vimentin were both immunoreactive (Fig. 2). CD34 was not stained outside of the vessels and CD68 was stained at macrophage level. It was also pankeratin negative. The histopathologic diagnosis was

typical hibernoma. The postoperative period was uneventful and the patient was discharged in the fourth postoperative day with full neurological recovery. His neurological examination at the sixth postoperative month was completely normal. Radiological evaluation revealed total excision without any recurrence (Fig. 3.).

Discussion

To best of our knowledge, we reported the first case of hibernoma in posterior fossa presenting abrupt onset of dizziness and hiccups. Due to its vascular content, radiologically vascular pathologies was highly suspected in the differential diagnosis of this case. Hibernomas are a very rare lipoma variant within the CNS, composed of uniform granular or multivacuolated cells with small, centrally located nuclei, resembling brown fat. It is found in humans during the 21–24th weeks of the fetal life in various locations, such as the neck, axilla, paraspinal region, mediastinum, and retroperitoneum. The amount of brown fat normally diminishes in volume shortly after birth, but it may persist in these locations; hibernomas can occur anywhere that brown fat remains.

The radiographic appearance of hibernomas is similar to that of lipomas or angiosarcomas, depending on the vascularity of the lesion. Hibernomas usually enhance inhomogeneously; a dominant feeding vessel and/or large intratumoral vessel is often visible.⁴ Murphey et al.⁴ discussed the presence of prominent high-flow and low flow vascular structures within masses that show MR signals similar or identical to fat as being an important feature for distinguishing hibernoma from liposarcoma. On T1 weight MRI they show up as hypointense to fat, and on T2 images they are usually found to be isointense to subcutaneous fat.³ Nevertheless, even if the CT and MRI findings may not be pathognomonic, hibernoma should be strongly considered if a mass shows negative HU measurements or MR signal intensity close to that of fat and contains large, branching blood vessels. In the present case, CT revealed hemorrhagic lesion (HU mean: 70) at anterior of the posterior lobe of cerebellum with compression to medulla oblongata with partial obstruction of fourth ventricle. MRI studies revealed a mass lesion neighbouring at medulla oblongata which had intratumoral large vessels with branching segments with heterogeneous contrast pattern which is highly suspicious for AVM. Angiography will also show the hypervascularity of the hibernoma along with possible arteriovenous shunts.⁵ Cranial angiography was planned in our case because of high suspicion of vascular lesion, however due to acute neurological deterioration of the patient during follow-up emergent surgery was performed.

Hibernomas are typically removed surgically because histology and pathology cannot be confirmed by imaging and can even mimic more ominous tumors on imaging studies. Differential diagnosis includes granular cell myoblastoma, round cell liposarcoma, lipoblastomatosis, sebaceous adenoma, pleomorphic lipoma, atypical

lipoma, chondroid lipoma, adult rhabdomyoma, and normal brown fat accumulation.¹ The imaging findings of hibernoma are not specific; other differential diagnostic considerations for a mass with signal similar to fat or containing large intratumoral vessels could include angioliipoma, hemangioma, lipoma, liposarcoma, alveolar soft part sarcoma, clear cell sarcoma, hemangiopericytoma, and hemangioblastoma. A definitive diagnosis is needed to exclude the possibility of malignant neoplasm; many advise excision rather than biopsy alone because of the risk of hemorrhage at biopsy of these vascular tumors.

Four morphological subtypes of hibernomas were described: typical, myxoid, lipoma-like, and spindle cell, and they were added to the WHO Tumor Classification.^{1, 3} These four subtypes are determined based on ratio of multivacuolate adipocytes that are commonly seen in brown fat and univacuolate adipocytes that are commonly seen in white fat. Tumors with $\geq 70\%$ multivacuolate adipocytes are considered to be non-lipoma hibernomas (typical), while $< 70\%$ multivacuolate adipocytes are considered lipoma-like hibernomas.^{1, 3, 5} The non-lipoma or typical subtype is considered the most common (82%) and has three histological appearances: the eosinophilic variant, the pale variant, and the mixed variant. In the present case, it has been diagnosed as typical hibernoma. Approximately 85% of all hibernomas were found to contain S100 protein on immunohistochemical staining which is also positive in our case.³

Conclusion

Hibernoma located in the posterior fossa is a unique condition, which may cause acute deterioration of the patient. These lesions may radiologically mimic vascular malformations. Hibernoma must be kept in mind of neurological surgeons in the differential diagnosis of posterior fossa mass lesions.

References

1. Furlong MA, Fanburg-Smith JC, Mittinen M. The morphologic spectrum of hibernoma: a clinicopathologic study of 170 cases. *Am J Surg Pathol*. 2001;25:809-14.
2. Vagn-Hansen PL, Osgård O. Intracranial hibernoma. Report of a case. *Acta Pathol Microbiol Scand A*. 1972;80:145-9.
3. Moretti V, Brooks J, Lackman R. Spindle-Cell Hibernoma: A Clinicopathologic Comparison of This New Variant. *Orthopedics*. 2010;33(1):52-5. doi: 10.3928/01477447-20091124-29.
4. Murphey MD, Carroll JF, Flemming DJ, Pope TL, Gannon FH, Kransdorf MJ. From the archives of the AFIP: benign musculoskeletal lipomatous lesions. *Radiographics*. 2004;24(5):1433-66.
5. Balaguera J, Fernandez I, Aquiriano L, Gonzalez M, Orellana J, Cerquella H. Axillary Hibernoma: An Unusual Benign Soft-Tissue Tumor. *Int Jour of Surg*. 2010;22:1.

Figure Legend

Fig. 1. A. Non-contrast enhanced CT revealed hemorrhagic lesion at anterior portion of the posterior lobe of cerebellum. **B-D.** Magnetic Resonance Imaging (MRI) revealed a mass lesion neighbouring at medulla oblongata which had intratumoral large vessels with branching segments. **B.** On T1 weighted images (WI) the lesion was isointense, **C.** on T2-WI it was hiperintense. **D.** On contrast enhanced MRI images heterogeneous contrast pattern was observed.

Fig 2. Representative Hematoxylin and eosin (H&E) and immunohistochemistry results for the typical hibernoma. **a, b** Low-power (**a**) and high-power (**b**) H&E views of the typical hibernoma. **c, d** High-power views of S100 (**c**) and CD-34 (**d**) immunohistochemistry.

Fig. 3. On postoperative contrast enhanced MRI images there was no residual lesion.

Abbreviations

AVM: arteriovenous malformation

CNS: Central nervous system

CT: computed tomography

GFAP: glial fibrillar acidic protein

H&E: Hematoxylin and eosin

HU: Hounsfield Unit

MRI: Magnetic Resonance Imaging

NSE: neuron specific enolase

PAS: periodic acid-schiff

WI: weighted images

ACCEPTED MANUSCRIPT

Highlights

- We reported the first hibernoma case located in posterior fossa radiologically mimicking arteriovenous malformation, presenting with abrupt onset of dizziness, and hiccups.
- Hibernoma located in the posterior fossa is a unique condition, which may cause acute deterioration of the patient.
- These lesions may radiologically mimic vascular malformations.
- Hibernoma must be kept in mind by neurological surgeons in the differential diagnosis of posterior fossa mass lesions.

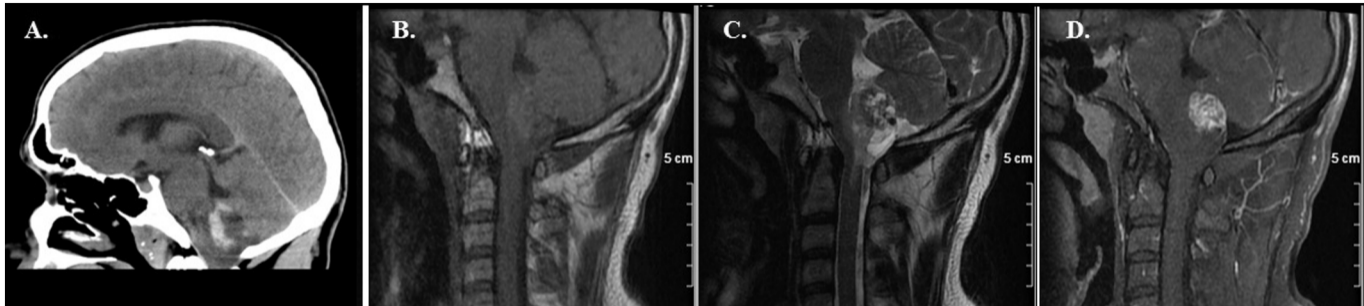


Figure 1

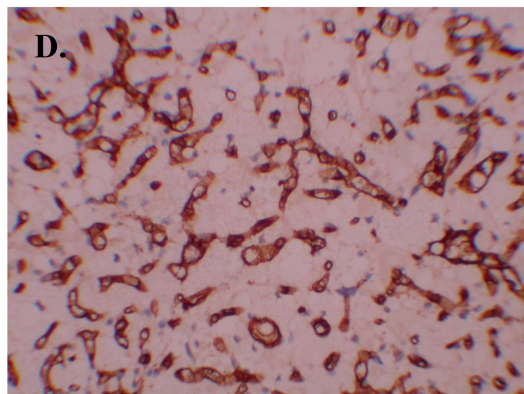
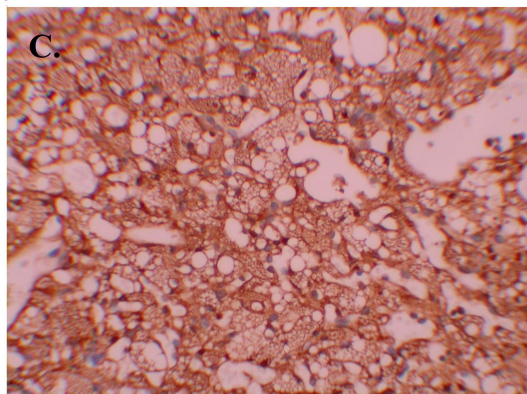
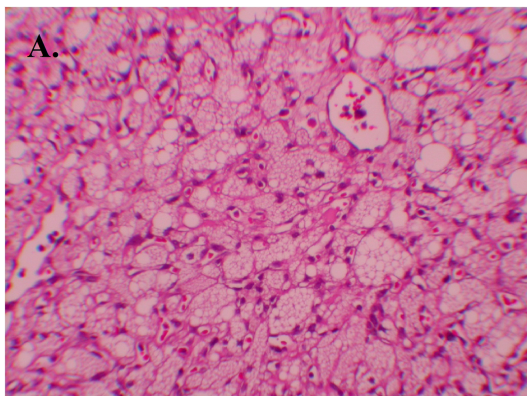


Figure 2

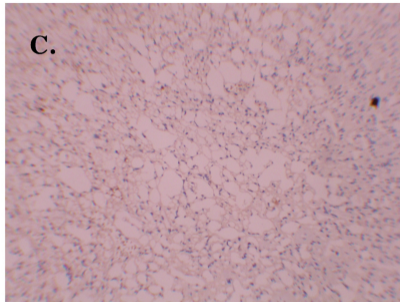
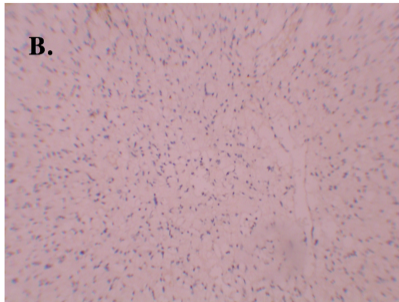
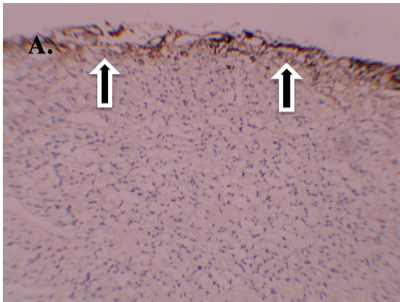


Figure 3

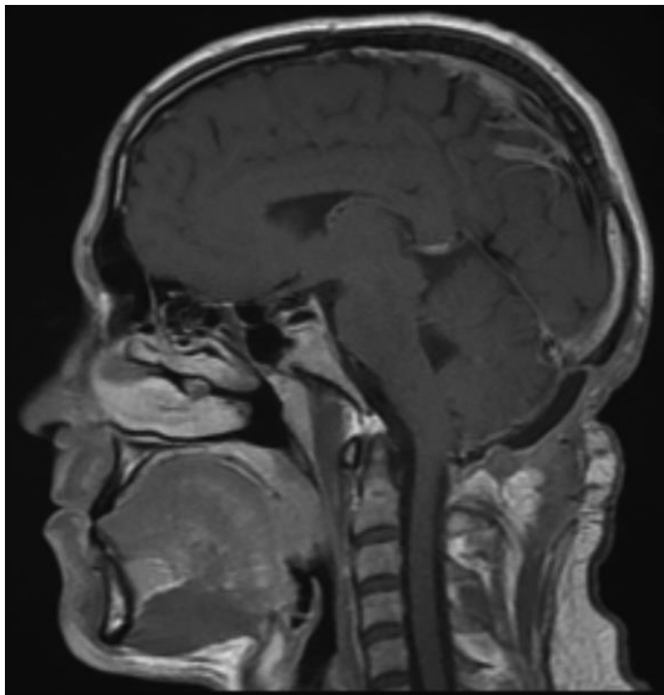


Figure 4